

**bs-23445R****[ Primary Antibody ]**

## TGF beta Receptor I Rabbit pAb

**Bioss**  
ANTIBODIES

www.bioss.com.cn

sales@bioss.com.cn

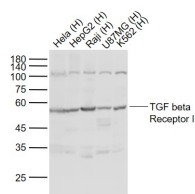
techsupport@bioss.com.cn

400-901-9800

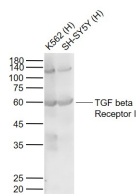
### DATASHEET

|  |                      |  |
|--|----------------------|--|
| <b>Host:</b> Rabbit  | <b>Isotype:</b> IgG  | <b>Applications:</b> WB (1:500-2000)   |
| <b>Clonality:</b> Polyclonal   |                      | <b>Reactivity:</b> Human (predicted: Mouse, Rat, Rabbit, Pig, Sheep, Cow, Chicken, Dog, Horse) |
| <b>GeneID:</b> 7046  | <b>SWISS:</b> P36897 | <b>Predicted MW.:</b> 55 kDa   |
| <b>Target:</b> TGF beta Receptor I   |                      | <b>Subcellular Location:</b> Cell membrane   |
| <b>Immunogen:</b> KLH conjugated synthetic peptide derived from human TGF beta Receptor I : 111-210/503. < Cytoplasmic >   |                      |  |
| <b>Purification:</b> affinity purified by Protein A  |                      |  |
| <b>Concentration:</b> 1mg/ml   |                      |  |
| <b>Storage:</b> 0.01M TBS (pH7.4) with 1% BSA, 0.02% Proclin300 and 50% Glycerol.<br>Shipped at 4°C. Store at -20°C for one year. Avoid repeated freeze/thaw cycles.   |                      |  |
| <b>Background:</b> The protein encoded by this gene forms a heteromeric complex with type II TGF-beta receptors when bound to TGF-beta, transducing the TGF-beta signal from the cell surface to the cytoplasm. The encoded protein is a serine/threonine protein kinase. Mutations in this gene have been associated with Loews-Dietz aortic aneurysm syndrome (LDAS). Multiple transcript variants encoding different isoforms have been found for this gene. [provided by RefSeq, Aug 2008] |                      |  |

### VALIDATION IMAGES



Sample: Lane 1: HeLa (Human) Cell Lysate at 30 ug  
Lane 2: HepG2 (Human) Cell Lysate at 30 ug  
Lane 3: Raji (Human) Cell Lysate at 30 ug  
Lane 4: U87MG (Human) Cell Lysate at 30 ug  
Lane 5: K562 (Human) Cell Lysate at 30 ug  
Primary: Anti-TGF beta Receptor I (bs-23445R) at 1/1000 dilution  
Secondary: IRDye800CW Goat Anti-Rabbit IgG at 1/20000 dilution  
Predicted band size: 55 kD  
Observed band size: 53 kD



Sample: Lane 1: K562 (Human) Cell Lysate at 30 ug  
Lane 2: SH-SY5Y (Human) Cell Lysate at 30 ug  
Primary: Anti-TGF beta Receptor I (bs-23445R) at 1/1000 dilution  
Secondary: IRDye800CW Goat Anti-Rabbit IgG at 1/20000 dilution  
Predicted band size: 55 kD  
Observed band size: 58 kD

### SELECTED CITATIONS

- **[IF=5.6]** Yake Wang. et al. The Upregulation of Leucine-Rich Repeat Containing 1 Expression Activates Hepatic Stellate Cells and Promotes Liver Fibrosis by Stabilizing Phosphorylated Smad2/3. INT J MOL SCI. 2024 Jan;25(5):2735 WB ;Human. 38473980