
ACE2 Rabbit pAb

Catalog Number: bs-23443R

Target Protein: ACE2

Concentration: 1mg/ml

Form: Liquid

Host: Rabbit

Clonality: Polyclonal

Isotype: IgG

Applications: WB (1:500-2000)

Reactivity: Human (predicted:Mouse, Rat)

Predicted MW: 87 kDa

Entrez Gene: 59272

Swiss Prot: Q9BYF1

Source: KLH conjugated synthetic peptide derived from human ACE2: 451-550/805.

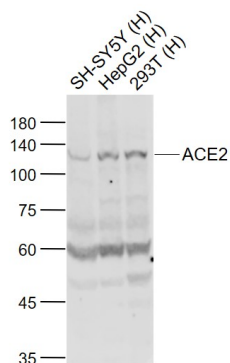
Purification: affinity purified by Protein A

Storage: 0.01M TBS (pH7.4) with 1% BSA, 0.02% Proclin300 and 50% Glycerol.

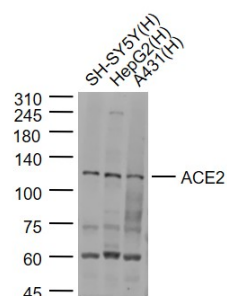
Shipped at 4°C. Store at -20°C for one year. Avoid repeated freeze/thaw cycles.

Background: The protein encoded by this gene belongs to the angiotensin-converting enzyme family of dipeptidyl carboxydipeptidases and has considerable homology to human angiotensin 1 converting enzyme. This secreted protein catalyzes the cleavage of angiotensin I into angiotensin 1-9, and angiotensin II into the vasodilator angiotensin 1-7. The organ- and cell-specific expression of this gene suggests that it may play a role in the regulation of cardiovascular and renal function, as well as fertility. In addition, the encoded protein is a functional receptor for the spike glycoprotein of the human coronaviruses SARS and HCoV-NL63. [provided by RefSeq, Jul 2008]

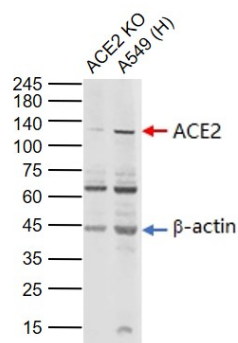
VALIDATION IMAGES



Sample: Lane 1: SH-SY5Y (Human) Cell Lysate at 30 ug Lane 2: HepG2 (Human) Cell Lysate at 30 ug Lane 3: 293T (Human) Cell Lysate at 30 ug Primary: Anti-ACE2 (bs-23443R) at 1/1000 dilution Secondary: IRDye800CW Goat Anti-Rabbit IgG at 1/20000 dilution Predicted band size: 120 kD Observed band size: 120 kD



Sample: Lane 1: SH-SY5Y (Human) Cell Lysate at 30 ug Lane 2: HepG2 (Human) Cell Lysate at 30 ug Lane 3: A431 (Human) Cell Lysate at 30 ug Primary: Anti-ACE2 (bs-23443R) at 1/1000 dilution Secondary: IRDye800CW Goat Anti-Rabbit IgG at 1/20000 dilution Predicted band size: 120 kD Observed band size: 120 kD



Sample: Lane 1: ACE2 knockout (KO) A549 Cell Lysate Lane 2: Human A549 Cell (Control) Lysate Primary: Anti-ACE2 (bs-23443R) at 1/1000 dilution Secondary: IRDye800CW Goat Anti-Rabbit IgG at 1/20000 dilution Predicted band size: 87 kD Observed band size: 120 kD

PRODUCT SPECIFIC PUBLICATIONS

[IF=2] Difang Sun. et al. Expression of the SARS-CoV-2 Receptor ACE2 and Protease TMPRSS2 in Ocular Hypertension Eyes of Nonhuman Primate and Human. CURR EYE RES. 2024 Jan 11 IF ; Monkey . 38212998