

**bs-23468R****[ Primary Antibody ]****CD200 Rabbit pAb****Bioss**  
**ANTIBODIES**

www.bioss.com.cn

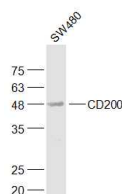
sales@bioss.com.cn

techsupport@bioss.com.cn

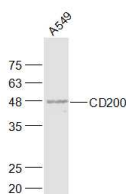
400-901-9800

**— DATASHEET —**

<b>Host:</b> Rabbit	<b>Isotype:</b> IgG	<b>Applications:</b> WB (1:500-2000)
<b>Clonality:</b> Polyclonal		<b>Reactivity:</b> Human (predicted: Mouse)
<b>GeneID:</b> 4345	<b>SWISS:</b> P41217	
<b>Target:</b> CD200		
<b>Immunogen:</b> KLH conjugated synthetic peptide derived from human CD200 : 31-130/278. < Extracellular >		<b>Predicted MW.:</b> 28 kDa
<b>Purification:</b> affinity purified by Protein A		<b>Subcellular Location:</b> Cell membrane
<b>Concentration:</b> 1mg/ml		
<b>Storage:</b> 0.01M TBS (pH7.4) with 1% BSA, 0.02% Proclin300 and 50% Glycerol. Shipped at 4°C. Store at -20°C for one year. Avoid repeated freeze/thaw cycles.		
<b>Background:</b> This gene encodes a type I membrane glycoprotein containing two extracellular immunoglobulin domains, a transmembrane and a cytoplasmic domain. This gene is expressed by various cell types, including B cells, a subset of T cells, thymocytes, endothelial cells, and neurons. The encoded protein plays an important role in immunosuppression and regulation of anti-tumor activity. Alternative splicing results in multiple transcript variants encoding different isoforms. [provided by RefSeq, Jan 2016]		

**— VALIDATION IMAGES —**

Sample: SW480(Human) Cell Lysate at 30 ug  
Primary: Anti-CD200 (bs-23468R) at 1/1000  
dilution Secondary: IRDye800CW Goat Anti-Rabbit IgG at 1/20000 dilution Predicted band size: 28 kD Observed band size: 47 kD



Sample: A549(Human) Cell Lysate at 30 ug  
Primary: Anti-CD200 (bs-23468R) at 1/1000  
dilution Secondary: IRDye800CW Goat Anti-Rabbit IgG at 1/20000 dilution Predicted band size: 28 kD Observed band size: 47 kD