

bs-3788R**[Primary Antibody]**

Bioss
ANTIBODIES

www.bioss.com.cn

sales@bioss.com.cn

techsupport@bioss.com.cn

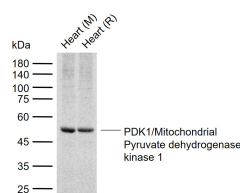
400-901-9800

PDK1/Mitochondrial Pyruvate dehydrogenase kinase 1 Rabbit pAb

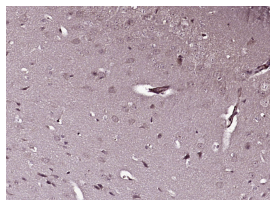
DATASHEET

Host: Rabbit	Isotype: IgG	Applications: WB (1:500-2000) IHC-P (1:100-500) IHC-F (1:100-500) IF (1:100-500) Flow-Cyt (1ug/Test)
Clonality: Polyclonal		
GeneID: 5163	SWISS: Q15118	
Target: PDK1/Mitochondrial Pyruvate dehydrogenase kinase 1		
Immunogen: KLH conjugated synthetic peptide derived from human PDK1: 51-150/436.		
Purification: affinity purified by Protein A		Reactivity: Human, Mouse, Rat (predicted: Rabbit, Pig, Cow, Chicken, Dog, Horse)
Concentration: 1mg/ml		
Storage: 0.01M TBS (pH7.4) with 1% BSA, 0.02% Proclin300 and 50% Glycerol. Shipped at 4°C. Store at -20°C for one year. Avoid repeated freeze/thaw cycles.		
Background: Pyruvate dehydrogenase (PDH) is a mitochondrial multienzyme complex that catalyzes the oxidative decarboxylation of pyruvate and is one of the major enzymes responsible for the regulation of homeostasis of carbohydrate fuels in mammals. The enzymatic activity is regulated by a phosphorylation/dephosphorylation cycle. Phosphorylation of PDH by a specific pyruvate dehydrogenase kinase (PDK) results in inactivation. Multiple alternatively spliced transcript variants have been found for this gene. [provided by RefSeq, Jun 2013]		
		Predicted MW.: 45 kDa
		Subcellular Location: Cytoplasm

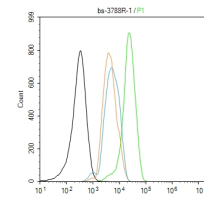
VALIDATION IMAGES



Sample: Lane 1: Mouse Heart tissue lysates Lane 2: Rat Heart tissue lysates Primary: Anti-PDK1/Mitochondrial Pyruvate dehydrogenase kinase 1 (bs-3788R) at 1/1000 dilution Secondary: IRDye800CW Goat Anti-Rabbit IgG at 1/20000 dilution Predicted band size: 45 kDa Observed band size: 50 kDa



Paraformaldehyde-fixed, paraffin embedded (Mouse brain); Antigen retrieval by boiling in sodium citrate buffer (pH6.0) for 15min; Block endogenous peroxidase by 3% hydrogen peroxide for 20 minutes; Blocking buffer (normal goat serum) at 37°C for 30min; Antibody incubation with (PDK1/Mitochondrial Pyruvate dehydrogenase kinase 1) Polyclonal Antibody, Unconjugated (bs-3788R) at 1:400 overnight at 4°C, followed by operating according to SP Kit(Rabbit) (sp-0023) instructions and DAB staining.



Blank control (black line) :SH-SY5Y. Primary Antibody (green line): Rabbit Anti-PDK1 antibody (bs-3788R) Dilution:1ug/Test; Secondary Antibody (white blue line) : Goat anti-rabbit IgG-FITC Dilution: 0.5ug/Test. Isotype control (orange line) : Normal Rabbit IgG Protocol The cells were fixed with 4% PFA (10min at room temperature) and then permeabilized with 90% ice-cold methanol for 20 min at -20°C, The cells were then incubated in 5%BSA to block non-specific protein-protein interactions for 30 min at room temperature. Cells stained with Primary Antibody for 30 min at room temperature. The secondary antibody used for 40 min at room temperature. Acquisition of 20,000 events was performed.

SELECTED CITATIONS

- **[IF=2.705]** Hu HJ et al. Regulating the Warburg effect on metabolic stress and myocardial fibrosis remodeling and atrial intracardiac waveform activity induced by atrial fibrillation. Biochem Biophys Res Commun. 2019 Aug 27;516(3):653-660. WB ;beagle canine. 31242971

Important Note: This product as supplied is intended for research use only, not for use in human, therapeutic or diagnostic applications.

- **[IF=2.906]** Jinfeng Zhu et al. Expression and prognostic significance of pyruvate dehydrogenase kinase 1 in bladder urothelial carcinoma. Virchows Arch. 2020 Nov;477(5):637-649. IHC ;Human. 32388719