

**bs-3858R****[ Primary Antibody ]****SH2D2A Rabbit pAb****Bioss**  
**ANTIBODIES**

www.bioss.com.cn

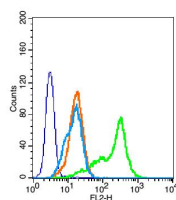
sales@bioss.com.cn

techsupport@bioss.com.cn

400-901-9800

**— DATASHEET —**

<b>Host:</b> Rabbit	<b>Isotype:</b> IgG	<b>Applications:</b> Flow-Cyt (1µg /Test)
<b>Clonality:</b> Polyclonal		<b>Reactivity:</b> Human (predicted: Mouse, Rat, Rabbit, Pig, Cow, Dog, Horse)
<b>GeneID:</b> 9047	<b>SWISS:</b> Q9NP31	
<b>Target:</b> SH2D2A		<b>Predicted MW.:</b> 43 kDa
<b>Immunogen:</b> KLH conjugated synthetic peptide derived from human SH2D2A: 101-200/389.		<b>Subcellular Location:</b> Cytoplasm
<b>Purification:</b> affinity purified by Protein A		
<b>Concentration:</b> 1mg/ml		
<b>Storage:</b> 0.01M TBS (pH7.4) with 1% BSA, 0.02% Proclin300 and 50% Glycerol. Shipped at 4°C. Store at -20°C for one year. Avoid repeated freeze/thaw cycles.		
<b>Background:</b> SH2D2A is thought to be a T-cell-specific adapter protein involved in the control of T-cell activation. It may play a role in the CD4-p56-LCK-dependent signal transduction pathway and also in normal and pathological angiogenesis.		

**— VALIDATION IMAGES —**

Blank control(blue): HUVEC cells(fixed with 2% paraformaldehyde (10 min),then permeabilized with 90% ice-cold methanol for 30 min on ice).  
Primary Antibody:Rabbit Anti- SH2D2A antibody(bs-3858R), Dilution: 1µg in 100 µL 1X PBS containing 0.5% BSA; Isotype Control Antibody: Rabbit IgG(orange) ,used under the same conditions ); Secondary Antibody: Goat anti-rabbit IgG-PE(white blue), Dilution: 1:200 in 1 X PBS containing 0.5% BSA.

**— SELECTED CITATIONS —**

- **[IF=12.35]** Compeer et al. A mobile endocytic network connects clathrin-independent receptor endocytosis to recycling and promotes T cell activation. (2018) Nat.Commun. 9:1597 IF ;Mouse. 29686427