
SLC37A4 Rabbit pAb

Catalog Number: bs-4039R

Target Protein: SLC37A4

Concentration: 1mg/ml

Form: Liquid

Host: Rabbit

Clonality: Polyclonal

Isotype: IgG

Applications: WB (1:500-2000)

Reactivity: Human (predicted: Mouse, Rat, Pig, Cow, Dog)

Predicted MW: 46 kDa

Subcellular: Cell membrane, Cytoplasm

Locations:

Entrez Gene: 2542

Swiss Prot: O43826

Source: KLH conjugated synthetic peptide derived from human G6PT2: 25-130/429.

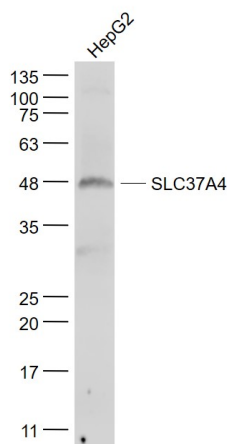
Purification: affinity purified by Protein A

Storage: 0.01M TBS (pH7.4) with 1% BSA, 0.02% Proclin300 and 50% Glycerol.

Shipped at 4°C. Store at -20°C for one year. Avoid repeated freeze/thaw cycles.

Background: SLC37A4 transports glucose-6-phosphate from the cytoplasm to the lumen of the endoplasmic reticulum. It forms a complex with glucose-6-phosphatase which is responsible for glucose production through glycogenolysis and gluconeogenesis. Hence, it plays a central role in homeostatic regulation of blood glucose levels.

VALIDATION IMAGES



Sample: HepG2 (Human) Cell Lysate at 30 ug Primary: Anti- SLC37A4 (bs-4039R) at 1/1000 dilution
Secondary: IRDye800CW Goat Anti-Rabbit IgG at 1/20000 dilution Predicted band size: 46 kD Observed band size: 48 kD