

**bs-3818R****[ Primary Antibody ]****Bioss**  
ANTIBODIES

www.bioss.com.cn

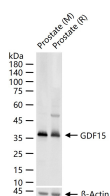
sales@bioss.com.cn

techsupport@bioss.com.cn

400-901-9800

**GDF15 Rabbit pAb****DATASHEET**

<p><b>Host:</b> Rabbit</p> <p><b>Clonality:</b> Polyclonal</p> <p><b>GeneID:</b> 9518</p> <p><b>Target:</b> GDF15</p> <p><b>Immunogen:</b> KLH conjugated synthetic peptide derived from human GDF-15: 221-308/308.</p> <p><b>Purification:</b> affinity purified by Protein A</p> <p><b>Concentration:</b> 1mg/ml</p> <p><b>Storage:</b> 0.01M TBS (pH7.4) with 1% BSA, 0.02% Proclin300 and 50% Glycerol. Shipped at 4°C. Store at -20°C for one year. Avoid repeated freeze/thaw cycles.</p> <p><b>Background:</b> Growth differentiation factor 15 (GDF15) is a member of the bone morphogenetic protein (BMP) family and the TGF-beta superfamily. It has been implicated in a variety of functions directly related to tumorigenicity including antiproliferative and pro-apoptotic effects. BMP proteins are secreted growth factors that are characterized by seven conserved cysteine residues. In general, they are regulators of cell growth and differentiation in both embryonic and adult tissues. GDF15 is an important downstream mediator of DNA damage signaling and a transcriptional target of p53.</p>	<p><b>Isotype:</b> IgG</p> <p><b>SWISS:</b> Q99988</p>	<p><b>Applications:</b> WB (1:500-2000)</p> <p><b>Reactivity:</b> Mouse, Rat</p> <p><b>Predicted MW.:</b> 12.5/34 kDa</p> <p><b>Subcellular Location:</b> Secreted</p>
---	--	--

**VALIDATION IMAGES**

25 ug total protein per lane of various lysates (see on figure) probed with GDF15 polyclonal antibody, unconjugated (bs-3818R) at 1:1000 dilution and 4°C overnight incubation. Followed by conjugated secondary antibody incubation at r.t. for 60 min.

**SELECTED CITATIONS**

- **[IF=7.561]** Huan Li. et al. The Clinical Value of GDF15 and Its Prospective Mechanism in Sepsis. Front Immunol. 2021; 12: 710977 WB ;human. 34566964
- **[IF=6.429]** Sugimoto Mitsuru. et al. Clinical usefulness and acceleratory effect of macrophage inhibitory cytokine-1 on biliary tract cancer: an experimental biomarker analysis. CANCER CELL INT. 2022 Dec;22(1):1-15 IHC ;Human. 35948981
- **[IF=4.6]** Figueiredo, Jose-Luiz, et al. "Selective Cathepsin S Inhibition Attenuates Atherosclerosis in Apolipoprotein E-Deficient Mice with Chronic Renal Disease." The American Journal of Pathology (2015). IHC ;="Mouse". 25680278
- **[IF=4.736]** Xu Guanlan. et al. Deletion of Gdf15 Reduces ER Stress-induced Beta-cell Apoptosis and Diabetes. ENDOCRINOLOGY. 2022 May;163(5): WB ;Mouse. 35290443
- **[IF=5.29]** Ueno, Koji, et al. "Increased plasma VEGF levels following ischemic preconditioning are associated with

Important Note: This product as supplied is intended for research use only, not for use in human, therapeutic or diagnostic applications.

downregulation of miRNA-762 and miR-3072-5p." Scientific Reports 6 (2016): 36758. WB ;="Mouse". 27905554