

bs-3777R**[Primary Antibody]****ASF1A Rabbit pAb****Bioss**
ANTIBODIES

www.bioss.com.cn

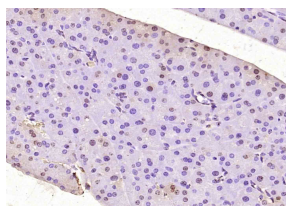
sales@bioss.com.cn

techsupport@bioss.com.cn

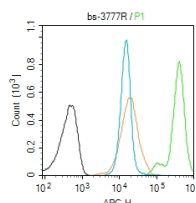
400-901-9800

— DATASHEET —

Host: Rabbit	Isotype: IgG	Applications: IHC-P (1:100-500) IHC-F (1:100-500) IF (1:100-500) Flow-Cyt (1 μ g/Test) Reactivity: Human, Mouse (predicted: Rat, Pig, Cow) Predicted MW.: 23 kDa Subcellular Location: Nucleus
Clonality: Polyclonal		
GeneID: 25842	SWISS: Q9Y294	
Target: ASF1A		
Immunogen: KLH conjugated synthetic peptide derived from human ASF1A: 101-204/204.		
Purification: affinity purified by Protein A		
Concentration: 1mg/ml		
Storage: 0.01M TBS (pH7.4) with 1% BSA, 0.02% Proclin300 and 50% Glycerol. Shipped at 4°C. Store at -20°C for one year. Avoid repeated freeze/thaw cycles.		
Background: ASF1a belongs to the H3/H4 family of histone chaperone proteins. The protein is a key component of a histone donor complex that functions in nucleosome assembly. It interacts with histones H3 and H4, and functions together with a chromatin assembly factor during DNA replication, repair and silencing.		

— VALIDATION IMAGES —

Paraformaldehyde-fixed, paraffin embedded (mouse pancreas tissue); Antigen retrieval by boiling in sodium citrate buffer (pH6.0) for 15min; Block endogenous peroxidase by 3% hydrogen peroxide for 20 minutes; Blocking buffer (normal goat serum) at 37°C for 30min; Antibody incubation with (ASF1A) Polyclonal Antibody, Unconjugated (bs-3777R) at 1:400 overnight at 4°C, followed by operating according to SP Kit(Rabbit) (sp-0023) instructions and DAB staining.



Blank control (Black line): Molt4 (Black). Primary Antibody (green line): Rabbit Anti-ASF1A antibody (bs-3777R) Dilution: 1 μ g /10⁶ cells; Isotype Control Antibody (orange line): Rabbit IgG . Secondary Antibody (white blue line): Goat anti-rabbit IgG-AF647 Dilution: 1 μ g /test. Protocol The cells were fixed with 4% PFA (10min at room temperature) and then permeabilized with 90% ice-cold methanol for 20 min at room temperature. The cells were then incubated in 5%BSA to block non-specific protein-protein interactions for 30 min at room temperature .Cells stained with Primary Antibody for 30 min at room temperature. The secondary antibody used for 40 min at room temperature. Acquisition of 20,000 events was performed.