
ITGA7 Rabbit pAb

Catalog Number: bs-1816R

Target Protein: ITGA7

Concentration: 1mg/ml

Form: Liquid

Host: Rabbit

Clonality: Polyclonal

Isotype: IgG

Applications: WB (1:500-2000), IHC-P (1:100-500), IHC-F (1:100-500), IF (1:100-500)

Reactivity: Human, Mouse, Rat

Predicted MW: 70/101/125 kDa

Entrez Gene: 3679

Swiss Prot: Q13683

Source: KLH conjugated synthetic peptide derived from human Integrin alpha-7 70 kDa form: 701-800/1181.

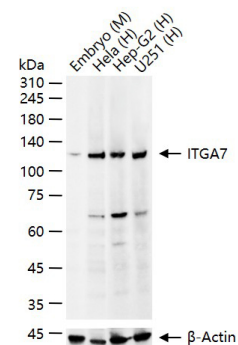
Purification: affinity purified by Protein A

Storage: 0.01M TBS (pH7.4) with 1% BSA, 0.02% Proclin300 and 50% Glycerol.

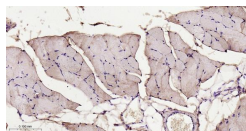
Shipped at 4°C. Store at -20°C for one year. Avoid repeated freeze/thaw cycles.

Background: The protein encoded by this gene belongs to the integrin alpha chain family. Integrins are heterodimeric integral membrane proteins composed of an alpha chain and a beta chain. They mediate a wide spectrum of cell-cell and cell-matrix interactions, and thus play a role in cell migration, morphologic development, differentiation, and metastasis. This protein functions as a receptor for the basement membrane protein laminin-1. It is mainly expressed in skeletal and cardiac muscles and may be involved in differentiation and migration processes during myogenesis. Defects in this gene are associated with congenital myopathy. Alternatively spliced transcript variants encoding different isoforms have been noted for this gene. [provided by RefSeq, Feb 2009]

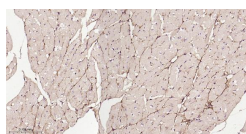
VALIDATION IMAGES



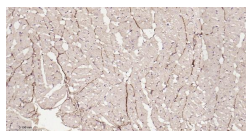
25 ug total protein per lane of various lysates (see on figure) probed with ITGA7 polyclonal antibody, unconjugated (bs-1816R) at 1:1000 dilution and 4°C overnight incubation. Followed by conjugated secondary antibody incubation at r.t. for 60 min.



Paraformaldehyde-fixed, paraffin embedded Mouse Skeletal muscle; Antigen retrieval by boiling in sodium citrate buffer (pH6.0) for 15 min; Antibody incubation with ITGA7 Polyclonal Antibody, Unconjugated (bs-1816R) at 1:200 overnight at 4°C, followed by conjugation to the bs-0295G-HRP and DAB (C-0010) staining.



Paraformaldehyde-fixed, paraffin embedded Mouse Heart; Antigen retrieval by boiling in sodium citrate buffer (pH6.0) for 15 min; Antibody incubation with ITGA7 Polyclonal Antibody, Unconjugated (bs-1816R) at 1:200 overnight at 4°C, followed by conjugation to the bs-0295G-HRP and DAB (C-0010) staining.



Paraformaldehyde-fixed, paraffin embedded Rat Heart; Antigen retrieval by boiling in sodium citrate buffer (pH6.0) for 15 min; Antibody incubation with ITGA7 Polyclonal Antibody, Unconjugated (bs-1816R) at 1:200 overnight at 4°C, followed by conjugation to the bs-0295G-HRP and DAB (C-0010) staining.

PRODUCT SPECIFIC PUBLICATIONS

[IF=7.666] Elisabetta Botticelli. et al. $\alpha 7$ Nicotinic Acetylcholine Receptors May Improve Schwann Cell Regenerating Potential via Metabotropic Signaling Pathways. CELLS-BASEL. 2023 Jan;12(11):1494 WB ; Rat . 37296615

[IF=5.162] Lianbao Kan. et al. TMT-based quantitative proteomic analysis of antitumor mechanism of Sporisorium reilianum polysaccharide WM-NP-60 against HCT116 cells. Int J Biol Macromol. 2020 Dec;165:1755 WB ; Human . 33068624

[IF=4.6] Jianjun Wang. et al. Promoter hypermethylation-induced downregulation of ITGA7 promotes colorectal cancer proliferation and migration by activating the PI3K/AKT/NF- κ B pathway. BBA-MOL CELL RES. 2024 Oct;1871:119785 WB ; Human . 38885843

[IF=3.97] Tang, Yi, et al. "ART1 promotes starvation-induced autophagy: a possible protective role in the development of colon carcinoma." American Journal of Cancer Research 2015;5(2):498-513 WB ; "Mouse" . 25973293

[IF=3.687] Zhao et al. Disrupted Endothelial Cell Layer and Exposed Extracellular Matrix Proteins Promote Capture of Late Outgrowth Endothelial Progenitor Cells. (2016) Stem.Cells.In. 2016:1406304 Other ; Human . 27413378