

bs-1809R**[Primary Antibody]****Camk1g Rabbit pAb****Bioss**
ANTIBODIES

www.bioss.com.cn

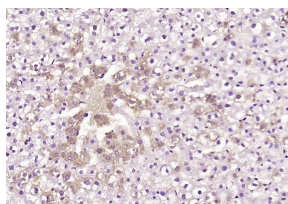
sales@bioss.com.cn

techsupport@bioss.com.cn

400-901-9800

— DATASHEET —

Host: Rabbit	Isotype: IgG	Applications: IHC-P (1:100-500) IHC-F (1:100-500) IF (1:100-500) Reactivity: Rat (predicted: Human, Mouse) Predicted MW.: 53 kDa Subcellular Location: Cell membrane ,Cytoplasm
Clonality: Polyclonal		
GeneID: 57172	SWISS: Q96NX5	
Target: Camk1g		
Immunogen: KLH conjugated synthetic peptide derived from human Camk1g: 381-476/476.		
Purification: affinity purified by Protein A		
Concentration: 1mg/ml		
Storage: 0.01M TBS (pH7.4) with 1% BSA, 0.02% Proclin300 and 50% Glycerol. Shipped at 4°C. Store at -20°C for one year. Avoid repeated freeze/thaw cycles.		
Background: CaMKI gamma is a Calcium/calmodulin-dependent protein kinase which belongs to a proposed calcium-triggered signaling cascade. In vitro it phosphorylates transcription factor CREB1. It has been proposed that CaMKI gamma is involved in dendritic outgrowth mediated by CaM-dependant protein kinase kinase.		

— VALIDATION IMAGES —

Paraformaldehyde-fixed, paraffin embedded (rat liver); Antigen retrieval by boiling in sodium citrate buffer (pH6.0) for 15min; Block endogenous peroxidase by 3% hydrogen peroxide for 20 minutes; Blocking buffer (normal goat serum) at 37°C for 30min; Antibody incubation with (Camk1g) Polyclonal Antibody, Unconjugated (bs-1809R) at 1:200 overnight at 4°C, followed by operating according to SP Kit(Rabbit) (sp-0023) instructions and DAB staining.