

bs-1805R**[Primary Antibody]****Bioss**
ANTIBODIES

www.bioss.com.cn

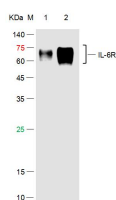
sales@bioss.com.cn

techsupport@bioss.com.cn

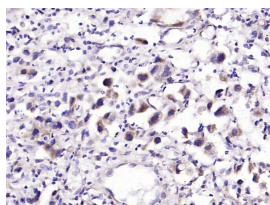
400-901-9800

IL-6R alpha Rabbit pAb**DATASHEET**

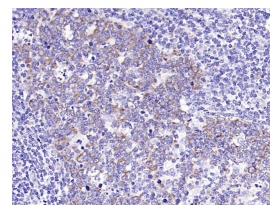
Host: Rabbit Clonality: Polyclonal GeneID: 16194 Target: IL-6R alpha Immunogen: KLH conjugated synthetic peptide derived from mouse IL-6R alpha: 351-460/460. < Cytoplasmic > Purification: affinity purified by Protein A Concentration: 1mg/ml Storage: 0.01M TBS (pH7.4) with 1% BSA, 0.02% Proclin300 and 50% Glycerol. Shipped at 4°C. Store at -20°C for one year. Avoid repeated freeze/thaw cycles. Background: Interleukin 6 (IL6) is a potent pleiotropic cytokine that regulates cell growth and differentiation and plays an important role in immune response. The protein encoded by this gene is a subunit of the receptor complex for IL6. The IL6 receptor is a protein complex consisting of this protein and interleukin 6 signal transducer (IL6ST/GP130/IL6-beta), a receptor subunit also shared by many other cytokines. Dysregulated production of IL6 and this receptor are implicated in the pathogenesis of many diseases, such as multiple myeloma, autoimmune diseases and prostate cancer. Alternatively spliced transcript variants encoding distinct isoforms have been reported. [provided by RefSeq].	Isotype: IgG SWISS: P22272	Applications: WB (1:500-2000) IHC-P (1:100-500) IHC-F (1:100-500) IF (1:100-500) Reactivity: Human Predicted MW.: 50 kDa Subcellular Location: Secreted ,Cell membrane
---	---	--

VALIDATION IMAGES

Sample: Lane 1: Recombinant Human IL-6R alpha Protein at 50ng Lane 2: Recombinant Human IL-6R alpha Protein at 500ng Primary: Rabbit Anti-IL-6R alpha Antibody at 1/1000 dilution (Cat.bs-1805R) Secondary: IRDye800CW Goat Anti-Rabbit IgG at 1/20000 dilution Predicted band size: 42kD Observed band size: 58-75kD



Paraformaldehyde-fixed, paraffin embedded Human Gastric Cancer; Antigen retrieval by boiling in sodium citrate buffer (pH6.0) for 15 min; Antibody incubation with IL-6R alpha Polyclonal Antibody, Unconjugated (bs-1805R) at 1:200 overnight at 4°C, followed by conjugation to the bs-0295G-HRP and DAB (C-0010) staining.



Paraformaldehyde-fixed, paraffin embedded Human Tonsil; Antigen retrieval by boiling in sodium citrate buffer (pH6.0) for 15 min; Antibody incubation with IL-6R alpha Polyclonal Antibody, Unconjugated (bs-1805R) at 1:200 overnight at 4°C, followed by conjugation to the bs-0295G-HRP and DAB (C-0010) staining.

SELECTED CITATIONS

- **[IF=12.4]** Xiaofang Qiu. et al. Alcohol reshapes a liver premetastatic niche for cancer by extra- and intrahepatic crosstalk-mediated immune evasion. MOL THER. 2023 Jul 18 IHC ;Mouse. 37469143
- **[IF=3.98]** Urushima, Hayato, et al. "Leucine-rich alpha 2 glycoprotein promotes Th17 differentiation and collagen-induced arthritis in mice through enhancement of TGF-β-Smad2 signaling in naïve helper T cells." Arthritis Research & Therapy 19.1 (2017): 137. IHC ;="Mouse". 28615031
- **[IF=4]** Przystaz, Katja, et al. "Distinct effects of interleukin-6 classic and trans-signaling in bone fracture healing." The American Journal of Pathology. IHC ;="Mouse". 29146294

Important Note: This product as supplied is intended for research use only, not for use in human, therapeutic or diagnostic applications.

- **[IF=4.487]** Han IH et al. IL-6 produced by prostate epithelial cells stimulated with *Trichomonas vaginalis* promotes proliferation of prostate cancer cells by inducing M2 polarization of THP-1-derived macrophages. *PLoS Negl Trop Dis*. 2020 Mar 20;14(3):e0008126. IF ;human. 32196489
- **[IF=3.36]** Iwamura H et al. Caloric restriction reduces basal cell proliferation and results in the deterioration of neuroepithelial regeneration following olfactotoxic mucosal damage in mouse olfactory mucosa. *Cell Tissue Res*. 2019 Jun 6. IHC ;Mouse. 31168693