

**bs-5501R****[ Primary Antibody ]****phospho-MEF2D (Ser180) Rabbit pAb****BioSS**  
**ANTIBODIES**

www.bioss.com.cn

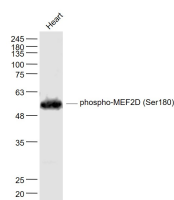
sales@bioss.com.cn

techsupport@bioss.com.cn

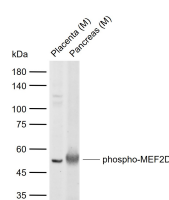
400-901-9800

**— DATASHEET —**

<b>Host:</b> Rabbit <b>Clonality:</b> Polyclonal <b>GeneID:</b> 4209 <b>Target:</b> MEF2D (Ser180) <b>Immunogen:</b> KLH conjugated Synthesised phosphopeptide derived from human MEF2D around the phosphorylation site of Ser180: LL(p-S)PQ. <b>Purification:</b> affinity purified by Protein A <b>Concentration:</b> 1mg/ml <b>Storage:</b> 0.01M TBS (pH7.4) with 1% BSA, 0.02% Proclin300 and 50% Glycerol. Shipped at 4°C. Store at -20°C for one year. Avoid repeated freeze/thaw cycles. <b>Background:</b> MEF2D is a member of the myocyte-specific enhancer factor 2 (MEF2) family of transcription factors. Members of this family are involved in control of muscle and neuronal cell differentiation and development, and are regulated by class II histone deacetylases. Fusions of the encoded protein with Deleted in Azoospermia-Associated Protein 1 (DAZAP1) due to a translocation have been found in an acute lymphoblastic leukemia cell line, suggesting a role in leukemogenesis. The encoded protein may also be involved in Parkinson disease and myotonic dystrophy. Alternative splicing results in multiple transcript variants.	<b>Isotype:</b> IgG <b>SWISS:</b> Q14814 <b>Applications:</b> WB (1:500-2000) <b>Reactivity:</b> Mouse (predicted: Human, Rat, Rabbit, Pig, Cow, Chicken, Dog, Horse) <b>Predicted MW.:</b> 57 kDa <b>Subcellular Location:</b> Nucleus
---	--

**— VALIDATION IMAGES —**

Sample: Heart (Mouse) Lysate at 40 ug Primary:  
 Anti- phospho-MEF2D (Ser180) (bs-5501R) at  
 1/1000 dilution Secondary: IRDye800CW Goat  
 Anti-Rabbit IgG at 1/20000 dilution Predicted  
 band size: 57 kD Observed band size: 57 kD



Sample: Lane 1: Mouse Placenta tissue lysates  
 Lane 2: Mouse Pancreas tissue lysates Primary:  
 Anti-phospho-MEF2D (Ser180) (bs-5501R) at  
 1/1000 dilution Secondary: IRDye800CW Goat  
 Anti-Rabbit IgG at 1/20000 dilution Predicted  
 band size: 57 kDa Observed band size: 53 kDa