

**bs-4134R****[ Primary Antibody ]****MAP4K1 Rabbit pAb****BioSS**  
**ANTIBODIES**

www.bioss.com.cn

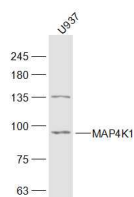
sales@bioss.com.cn

techsupport@bioss.com.cn

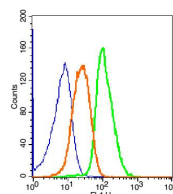
400-901-9800

**— DATASHEET —**

<b>Host:</b> Rabbit	<b>Isotype:</b> IgG	<b>Applications:</b> <b>WB</b> (1:500-2000) <b>Flow-Cyt</b> (1µg/Test)
<b>Clonality:</b> Polyclonal		
<b>GeneID:</b> 11184	<b>SWISS:</b> Q92918	
<b>Target:</b> MAP4K1		
<b>Immunogen:</b> KLH conjugated synthetic peptide derived from human MAP4K1: 231-330/833.		
<b>Purification:</b> affinity purified by Protein A		
<b>Concentration:</b> 1mg/ml		
<b>Storage:</b> 0.01M TBS (pH7.4) with 1% BSA, 0.02% Proclin300 and 50% Glycerol. Shipped at 4°C. Store at -20°C for one year. Avoid repeated freeze/thaw cycles.		<b>Reactivity:</b> Human (predicted: Mouse, Rat, Cow)
<b>Background:</b> May play a role in the response to environmental stress. Appears to act upstream of the JUN N-terminal pathway. May play a role in hematopoietic lineage decisions and growth regulation.		<b>Predicted MW.:</b> 91 kDa
		<b>Subcellular Location:</b> Cell membrane ,Cytoplasm

**— VALIDATION IMAGES —**

Sample: U937(Human) Cell Lysate at 30 ug  
Primary: Anti-MAP4K1 (bs-4134R) at 1/300  
dilution Secondary: IRDye800CW Goat Anti-  
Rabbit IgG at 1/20000 dilution Predicted band  
size: 91 kD Observed band size: 91 kD



Blank control: Hep G2 Cells(blue),fixed with 2% paraformaldehyde (10 min) and then permeabilized with ice-cold 90% methanol for 30 min on ice. Primary Antibody: Rabbit Anti-MAP4K1/AF647 Conjugated antibody (bs-4134R/AF647), Dilution: 1µg in 100 µL 1X PBS containing 0.5% BSA; Isotype Control Antibody: Rabbit IgG/AF647(orange) ,used under the same conditions.