

bs-1807R**[Primary Antibody]****GPR78 Rabbit pAb**

Bioss
ANTIBODIES

www.bioss.com.cn

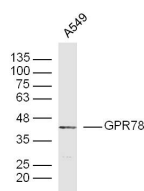
sales@bioss.com.cn

techsupport@bioss.com.cn

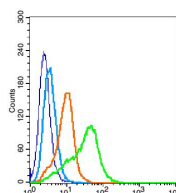
400-901-9800

DATASHEET

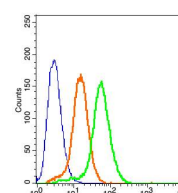
Host: Rabbit Clonality: Polyclonal GeneID: 27201 Target: GPR78 Immunogen: KLH conjugated synthetic peptide derived from human GPR78: 201-300/363. < Extracellular > Purification: affinity purified by Protein A Concentration: 1mg/ml Storage: 0.01M TBS (pH7.4) with 1% BSA, 0.02% Proclin300 and 50% Glycerol. Shipped at 4°C. Store at -20°C for one year. Avoid repeated freeze/thaw cycles. Background: The protein encoded by this gene belongs to the G protein-coupled receptor family, which contain 7 transmembrane domains and transduce extracellular signals through heterotrimeric G proteins. This is an orphan receptor, which displays significant level of constitutive activity. Association analysis shows preliminary evidence for the involvement of this gene in susceptibility to bipolar affective disorder and schizophrenia. Alternatively spliced transcript variants have been found for this gene. [provided by RefSeq, Nov 2011]	Isotype: IgG SWISS: Q96P69	Applications: WB (1:500-2000) Flow-Cyt (1µg /test) Reactivity: Human Predicted MW.: 39 kDa Subcellular Location: Cell membrane
--	---	--

VALIDATION IMAGES

Sample: A549 Cell (Human) Lysate at 30 ug
 Primary: Anti-GPR78(bs-1807R) at 1/300 dilution
 Secondary: IRDye800CW Goat Anti-Rabbit IgG at 1/20000 dilution Predicted band size: 39 kD
 Observed band size: 39 kD



Blank control (blue line): U937 (blue). Primary Antibody (green line): Rabbit Anti-GPR7 antibody (bs-1807R) Dilution: 1µg /10⁶ cells; Isotype Control Antibody (orange line): Rabbit IgG . Secondary Antibody (white blue line): Goat anti-rabbit IgG-PE Dilution: 1µg /test. Protocol The cells were fixed with 2% paraformaldehyde for 10 min at room temperature. The cells were then incubated in 1 X PBS/2%BSA/10% goat serum to block non-specific protein-protein interactions followed by the antibody for 15 min at room temperature. The secondary antibody used for 40 min at room temperature. Acquisition of 20,000 events was performed.



Blank control: 293T Cells(blue). Primary Antibody: Rabbit Anti-GPR78/AF488 Conjugated antibody (bs-1807R-AF488), Dilution: 1µg in 100 µL 1X PBS containing 0.5% BSA; Isotype Control Antibody: Rabbit IgG/AF488(orange), used under the same conditions. Protocol The cells were fixed with 2% paraformaldehyde (10 min) . The cells were washed twice with 1 X PBS. The cells were incubated in 1 X PBS containing 0.5% BSA + 1 0% goat serum (15 min) to block non-specific protein-protein interactions followed by the incubated with antibody (bs-1807R-AF488, 1µg /1x10⁶ cells) for 30 min on ice. Acquisition of 20,000 events was performed.