

**bs-1801R**

**[ Primary Antibody ]**

## NPTN Rabbit pAb

**BioSS**  
ANTIBODIES

www.bioss.com.cn

sales@bioss.com.cn

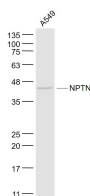
techsupport@bioss.com.cn

400-901-9800

### — DATASHEET —

<b>Host:</b> Rabbit	<b>Isotype:</b> IgG	<b>Applications:</b> WB (1:500-2000)
<b>Clonality:</b> Polyclonal		<b>Reactivity:</b> Human (predicted: Mouse, Rat, Pig, Sheep, Cow, Chicken, Dog, Horse)
<b>GeneID:</b> 27020	<b>SWISS:</b> Q9Y639	
<b>Target:</b> NPTN		<b>Predicted MW.:</b> 42 kDa
<b>Immunogen:</b> KLH conjugated synthetic peptide derived from human NPTN: 51-150/298. < Extracellular >		<b>Subcellular Location:</b> Cell membrane
<b>Purification:</b> affinity purified by Protein A		
<b>Concentration:</b> 1mg/ml		
<b>Storage:</b> 0.01M TBS (pH7.4) with 1% BSA, 0.02% Proclin300 and 50% Glycerol. Shipped at 4°C. Store at -20°C for one year. Avoid repeated freeze/thaw cycles.		
<b>Background:</b> This gene encodes a type I transmembrane protein belonging to the Ig superfamily. The protein is believed to be involved in cell-cell interactions or cell-substrate interactions. Alternative splicing results in multiple transcript variants. [provided by RefSeq, May 2009]		

### — VALIDATION IMAGES —



Sample: A549(Human) Cell Lysate at 30 ug  
Primary: Anti- NPTN (bs-1801R) at 1/1000  
dilution Secondary: IRDye800CW Goat Anti-  
Rabbit IgG at 1/20000 dilution Predicted band  
size: 42 kD Observed band size: 42 kD