

bs-1773R**[Primary Antibody]****Follistatin Rabbit pAb****BioSS**
ANTIBODIES

www.bioss.com.cn

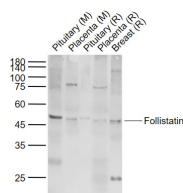
sales@bioss.com.cn

techsupport@bioss.com.cn

400-901-9800

— DATASHEET —

| | | |
|---|----------------------|--|
| Host: Rabbit | Isotype: IgG | Applications: WB (1:500-2000) |
| Clonality: Polyclonal | | Reactivity: Human, Mouse, Rat (predicted: Pig, Sheep, Cow, Chicken, Dog, Horse) |
| GeneID: 10468 | SWISS: P19883 | |
| Target: Follistatin | | Predicted MW.: 38 kDa |
| Immunogen: KLH conjugated synthetic peptide derived from human Follistatin: 151-250/344. | | Subcellular Location: Secreted |
| Purification: affinity purified by Protein A | | |
| Concentration: 1mg/ml | | |
| Storage: 0.01M TBS (pH7.4) with 1% BSA, 0.02% Proclin300 and 50% Glycerol. Shipped at 4°C. Store at -20°C for one year. Avoid repeated freeze/thaw cycles. | | |
| Background: Follistatin is a single-chain gonadal protein that specifically inhibits follicle-stimulating hormone release. The single FST gene encodes two isoforms, FST317 and FST344 containing 317 and 344 amino acids respectively, resulting from alternative splicing of the precursor mRNA. There is evidence linking polycystic ovary syndrome and follistatin. Follistatin binds directly to activin and functions as an activin antagonist. It specific inhibitor of the biosynthesis and secretion of pituitary follicle stimulating hormone. | | |

— VALIDATION IMAGES —

Sample: Lane 1: Mouse Pituitary tissue lysates
Lane 2: Mouse Placenta tissue lysates Lane 3: Rat
Pituitary tissue lysates Lane 4: Rat Placenta
tissue lysates Lane 5: Rat Breast tissue lysates
Primary: Anti-Follistatin (bs-1773R) at 1/1000
dilution Secondary: IRDye800CW Goat Anti-
Rabbit IgG at 1/20000 dilution Predicted band
size: 38 kD Observed band size: 47 kD