

bs-3285R**[Primary Antibody]****phospho-MYPT1 (Ser507) Rabbit pAb****Bioss**
ANTIBODIES

www.bioss.com.cn

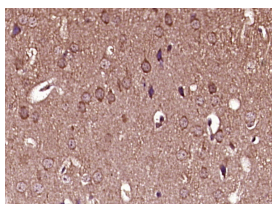
sales@bioss.com.cn

techsupport@bioss.com.cn

400-901-9800

— DATASHEET —

<p>Host: Rabbit</p> <p>Clonality: Polyclonal</p> <p>GeneID: 4659</p> <p>Target: MYPT1 (Ser507)</p> <p>Immunogen: KLH conjugated synthesised phosphopeptide derived from human MYPT1 around the phosphorylation site of Ser507: LA(p-S)TS.</p> <p>Purification: affinity purified by Protein A</p> <p>Concentration: 1mg/ml</p> <p>Storage: 0.01M TBS (pH7.4) with 1% BSA, 0.02% Proclin300 and 50% Glycerol. Shipped at 4°C. Store at -20°C for one year. Avoid repeated freeze/thaw cycles.</p> <p>Background: Myosin phosphatase regulates the interaction of actin and myosin downstream of the guanosine triphosphatase Rho. The small guanosine triphosphatase Rho is implicated in myosin light chain (MLC) phosphorylation, which results in contraction of smooth muscle and interaction of actin and myosin in non muscle cells. The guanosine triphosphate (GTP) bound, active form of RhoA (GTP.RhoA) specifically interacted with the myosin binding subunit (MBS) of myosin phosphatase, which regulates the extent of phosphorylation of MLC. Rho associated kinase (Rho kinase), which is activated by GTP. RhoA, phosphorylated MBS and consequently inactivated myosin phosphatase. Overexpression of RhoA or activated RhoA in NIH 3T3 cells increased phosphorylation of MBS and MLC. Therefore Rho appears to inhibit myosin phosphatase through the action of Rho kinase.</p>	<p>Applications: IHC-P (1:100-500) IHC-F (1:100-500) IF (1:100-500)</p> <p>Reactivity: Mouse (predicted: Human, Rat, Rabbit, Cow, Chicken, Dog, Horse)</p> <p>Predicted MW.: 113 kDa</p> <p>Subcellular Location: Cytoplasm</p>
---	--

— VALIDATION IMAGES —

Paraformaldehyde-fixed, paraffin embedded (Mouse brain); Antigen retrieval by boiling in sodium citrate buffer (pH6.0) for 15min; Block endogenous peroxidase by 3% hydrogen peroxide for 20 minutes; Blocking buffer (normal goat serum) at 37°C for 30min; Antibody incubation with (Phospho-MYPT1 (Ser507)) Polyclonal Antibody, Unconjugated (bs-3285R) at 1:400 overnight at 4°C, followed by operating according to SP Kit(Rabbit) (sp-0023) instructions and DAB staining.