

**bs-2995R****[ Primary Antibody ]****MSK1 Rabbit pAb****Bioss**  
**ANTIBODIES**

www.bioss.com.cn

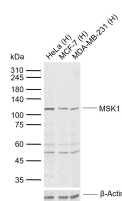
sales@bioss.com.cn

techsupport@bioss.com.cn

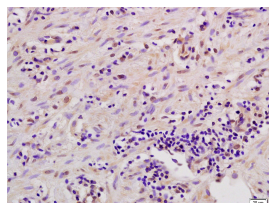
400-901-9800

**— DATASHEET —**

<b>Host:</b> Rabbit <b>Clonality:</b> Polyclonal <b>GeneID:</b> 9252 <b>Target:</b> MSK1 <b>Immunogen:</b> KLH conjugated synthetic peptide derived from human MSK1: 31-130/802. <b>Purification:</b> affinity purified by Protein A <b>Concentration:</b> 1mg/ml <b>Storage:</b> 0.01M TBS (pH7.4) with 1% BSA, 0.02% Proclin300 and 50% Glycerol. Shipped at 4°C. Store at -20°C for one year. Avoid repeated freeze/thaw cycles. <b>Background:</b> MSK1 is a mitogen and stress activated protein kinase 1 which belongs to the AGC family of kinases and is related in structure to the ribosomal p70 S6 kinase subfamily. MSK1 can be activated by ERK1/2 and SAPK2/p38 MAP kinase. It is also known to be required for the phosphorylation of CREB, ATF1 H3 and HMG14 in response to mitogen and stress. Similar to RSK, MSK1 contains two kinase domains (N term and a C term). Once phosphorylated on Thr581 and Ser360 by ERK1/2 and SAPK2/p38, MSK1 autophosphorylates on at least 5 sites. Of these autophosphorylation sites Ser212 and Ser376 get phosphorylated by the C terminal kinase domain of MSK1 which is essential for the catalytic activity of the N terminal kinase domain.	<b>Isotype:</b> IgG <b>SWISS:</b> O75582 <b>Applications:</b> <b>WB</b> (1:500-2000) <b>IHC-P</b> (1:100-500) <b>IHC-F</b> (1:100-500) <b>IF</b> (1:100-500) <b>Reactivity:</b> Human (predicted: Mouse, Rat, Rabbit, Pig, Cow, Chicken, Dog, Horse) <b>Predicted MW.:</b> 90 kDa <b>Subcellular Location:</b> Cytoplasm ,Nucleus
--	---

**— VALIDATION IMAGES —**

Sample: Lane 1: Human HeLa cell lysates Lane 2: Human MCF-7 cell lysates Lane 3: Human MDA-MB-231 cell lysates Primary: Anti-MSK1 (bs-2995R) at 1/1000 dilution Secondary: IRDye800CW Goat Anti-Rabbit IgG at 1/20000 dilution Predicted band size: 90 kDa Observed band size: 110 kDa



Tissue/cell: human gastric carcinoma; 4% Paraformaldehyde-fixed and paraffin-embedded; Antigen retrieval: citrate buffer (0.01M, pH 6.0), Boiling bathing for 15min; Block endogenous peroxidase by 3% Hydrogen peroxide for 30min; Blocking buffer (normal goat serum, C-0005) at 37°C for 20 min; Incubation: Anti-MSK1/RPS6KA5 Polyclonal Antibody, Unconjugated(bs-2995R) 1:200, overnight at 4°C, followed by conjugation to the secondary antibody(SP-0023) and DAB(C-0010) staining

**— SELECTED CITATIONS —**

- **[IF=4.106]** Ohm AM et al. EGF receptor and PKCδ kinase activate DNA damage-induced pro-survival and pro-apoptotic signaling via biphasic activation of ERK and MSK1 kinases. J Biol Chem. 2019 Mar 22;294(12):4488-4497. WB ;Rat. 30679314
- **[IF=1.515]** Sello CT et al. Variations in the expression pattern of HSP27 and MSK1 genes during the development of

Important Note: This product as supplied is intended for research use only, not for use in human, therapeutic or diagnostic applications.

prehierarchical follicles in the Zi geese (*Anser cygnoides*). ANNALS OF ANIMAL SCIENCE.2019 ISSN: 2300-8733, WB,IHC  
;geese. DOI:10.2478/aoas-2019-0048