

**bs-3275R****[ Primary Antibody ]****phospho-MEK6 (Ser207) Rabbit pAb****Bioss**  
**ANTIBODIES**

www.bioss.com.cn

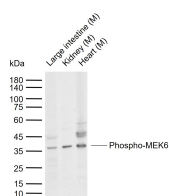
sales@bioss.com.cn

techsupport@bioss.com.cn

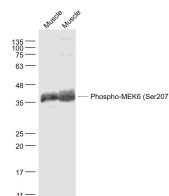
400-901-9800

**— DATASHEET —**

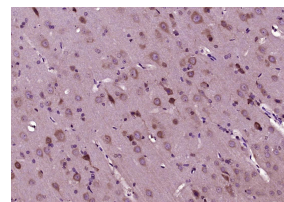
<b>Host:</b> Rabbit	<b>Isotype:</b> IgG	<b>Applications:</b> <b>WB</b> (1:500-2000)
<b>Clonality:</b> Polyclonal		<b>IHC-P</b> (1:100-500)
<b>GeneID:</b> 5608	<b>SWISS:</b> P52564	<b>IHC-F</b> (1:100-500)
<b>Target:</b> MEK6 (Ser207)		<b>IF</b> (1:100-500)
<b>Immunogen:</b> KLH conjugated synthesised phosphopeptide derived from human MEK6 around the phosphorylation site of Ser207: VD(p-S)VA.		<b>Reactivity:</b> Mouse, Rat (predicted: Human)
<b>Purification:</b> affinity purified by Protein A		
<b>Concentration:</b> 1mg/ml		<b>Predicted MW.:</b> 37 kDa
<b>Storage:</b> 0.01M TBS (pH7.4) with 1% BSA, 0.02% Proclin300 and 50% Glycerol. Shipped at 4°C. Store at -20°C for one year. Avoid repeated freeze/thaw cycles.		<b>Subcellular Location:</b> Cytoplasm ,Nucleus
<b>Background:</b> Mitogen activated protein kinase kinase 6 (MEK6 or MKK6) belongs to the serine/threonine protein kinase family and the MAPK kinase subfamily (MAP2K, MKK or MEKs). MEK6, closely related to MEK3, catalyzes the concomitant phosphorylation of a threonine and a tyrosine residue in MAP kinase p38, thus activating it, in response to inflammatory cytokines and environmental stress. As an essential component of p38 MAP kinase mediated signal transduction pathway, this protein is involved in many cellular processes such as stress induced cell cycle arrest, transcription activation and apoptosis.		

**— VALIDATION IMAGES —**

Sample: Lane 1: Mouse Large intestine tissue lysates Lane 2: Mouse Kidney tissue lysates Lane 3: Mouse Heart tissue lysates Primary: Anti-Phospho-MEK6 (Ser207) (bs-3275R) at 1/1000 dilution Secondary: IRDye800CW Goat Anti-Rabbit IgG at 1/20000 dilution Predicted band size: 37 kDa Observed band size: 37 kDa



Sample: Muscle (Mouse) Lysate at 40 ug Muscle (Rat) Lysate at 40 ug Primary: Anti- Phospho-MEK6 (Ser207) (bs-3275R) at 1/1000 dilution Secondary: IRDye800CW Goat Anti-Rabbit IgG at 1/20000 dilution Predicted band size: 37 kD Observed band size: 37 kD



Paraformaldehyde-fixed, paraffin embedded (Rat brain); Antigen retrieval by boiling in sodium citrate buffer (pH6.0) for 15min; Block endogenous peroxidase by 3% hydrogen peroxide for 20 minutes; Blocking buffer (normal goat serum) at 37°C for 30min; Antibody incubation with (Phospho-MEK6 (Ser207)) Polyclonal Antibody, Unconjugated (bs-3275R) at 1:400 overnight at 4°C, followed by operating according to SP Kit(Rabbit) (sp-0023) instructions and DAB staining.