

TGFBI Rabbit pAb

Catalog Number: bs-7443R

Target Protein: TGFBI

Concentration: 1mg/ml

Form: Liquid

Host: Rabbit

Clonality: Polyclonal

Isotype: IgG

Applications: WB (1:500-2000)

Reactivity: Mouse, Rat (predicted:Human, Rabbit, Pig, Sheep, Cow, Dog, Horse)

Predicted MW: 72 kDa

Entrez Gene: 7045

Swiss Prot: Q15582

Source: KLH conjugated synthetic peptide derived from human TGFBI: 81-130/130.

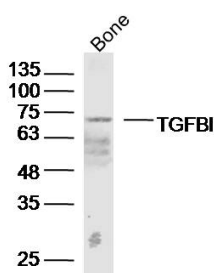
Purification: affinity purified by Protein A

Storage: 0.01M TBS (pH7.4) with 1% BSA, 0.02% Proclin300 and 50% Glycerol.

Shipped at 4°C. Store at -20°C for one year. Avoid repeated freeze/thaw cycles.

Background: This gene encodes an RGD-containing protein that binds to type I, II and IV collagens. The RGD motif is found in many extracellular matrix proteins modulating cell adhesion and serves as a ligand recognition sequence for several integrins. This protein plays a role in cell-collagen interactions and may be involved in endochondrial bone formation in cartilage. The protein is induced by transforming growth factor-beta and acts to inhibit cell adhesion. Mutations in this gene are associated with multiple types of corneal dystrophy. [provided by RefSeq, Jul 2008]

VALIDATION IMAGES



Sample: Bone (Mouse) Lysate at 40 ug Primary: Anti-TGFBI(bs-7443R) at 1/300 dilution Secondary: IRDye800CW Goat Anti-Rabbit IgG at 1/20000 dilution Predicted band size: 72kD Observed band size: 72kD

PRODUCT SPECIFIC PUBLICATIONS

[IF=14.511] Ying Xia. et al. SB431542 alleviates lupus nephritis by regulating B cells and inhibiting the TLR9/TGFβ1/PDGFB signaling. J AUTOIMMUN. 2022 Oct;132:102894 IHC ; Mouse . 36030617