

bs-1756R**[Primary Antibody]****BioSS**
ANTIBODIES

www.bioss.com.cn

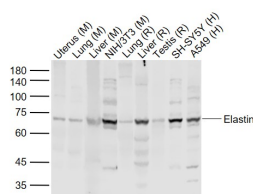
sales@bioss.com.cn

techsupport@bioss.com.cn

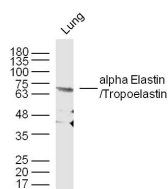
400-901-9800

Elastin Rabbit pAb**DATASHEET**

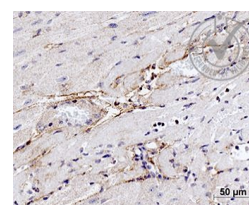
| | | |
|---|----------------------|--|
| Host: Rabbit | Isotype: IgG | Applications: WB (1:500-2000) IHC-P (1:100-500) IHC-F (1:100-500) IF (1:100-500) |
| Clonality: Polyclonal | | |
| GeneID: 2006 | SWISS: P15502 | |
| Target: Elastin | | Reactivity: Human, Mouse, Rat |
| Immunogen: KLH conjugated synthetic peptide derived from human Elastin: 681-786/786. | | |
| Purification: affinity purified by Protein A | | |
| Concentration: 1mg/ml | | Predicted MW.: 68 kDa |
| Storage: 0.01M TBS (pH7.4) with 1% BSA, 0.02% Proclin300 and 50% Glycerol. Shipped at 4°C. Store at -20°C for one year. Avoid repeated freeze/thaw cycles. | | Subcellular Location: Secreted ,Extracellular matrix |
| Background: This gene encodes a protein that is one of the two components of elastic fibers. Elastic fibers comprise part of the extracellular matrix and confer elasticity to organs and tissues including the heart, skin, lungs, ligaments, and blood vessels. The encoded protein is rich in hydrophobic amino acids such as glycine and proline, which form mobile hydrophobic regions bounded by crosslinks between lysine residues. Degradation products of the encoded protein, known as elastin-derived peptides or elastokines, bind the elastin receptor complex and other receptors and stimulate migration and proliferation of monocytes and skin fibroblasts. Elastokines can also contribute to cancer progression. Deletions and mutations in this gene are associated with supravalvular aortic stenosis (SVAS) and autosomal dominant cutis laxa. [provided by RefSeq, Aug 2017]. | | |

VALIDATION IMAGES

Sample: Lane 1: Uterus (Mouse) Lysate at 40 ug
Lane 2: Lung (Mouse) Lysate at 40 ug Lane 3:
Liver (Mouse) Lysate at 40 ug Lane 4: NIH/3T3
(Mouse) Cell Lysate at 30 ug Lane 5: Lung (Rat)
Lysate at 40 ug Lane 6: Liver (Rat) Lysate at 40 ug
Lane 7: Testis (Rat) Lysate at 40 ug Lane 8: SH-
SY5Y (Human) Cell Lysate at 30 ug Lane 9: A549
(Human) Cell Lysate at 30 ug Primary: Anti-
Elastin (bs-1756R) at 1/1000 dilution Secondary:
IRDye800CW Goat Anti-Rabbit IgG at 1/20000
dilution Predicted band size: 66 kD Observed
band size: 68 kD



Sample: Lung (Mouse) Lysate at 30 ug Primary:
Anti- alpha Elastin/Tropoelastin (bs-1756R) at
1/300 dilution Secondary: IRDye800CW Goat
Anti-Mouse IgG at 1/10000 dilution Predicted
band size: 70 kD Observed band size: 68 kD



Images provided the Independent Validation
Program (badge number 28751): Formalin-fixed
and paraffin embedded mouse heart labeled
with Rabbit Anti-alpha Elastin Polyclonal
Antibody (bs-1756R) at 1:1000 4°C temperature
overnight 4°C followed by conjugation to
secondary antibody.

SELECTED CITATIONS

- **[IF=38.1]** Shpitzen, Shoshi. et al.Characterization of LTBP2 mutation causing mitral valve prolapse.European heart journal open.2025 Jan 3;5(1):oeae106. IF ;Mouse. 39882270
- **[IF=9.5]** Kapish Gupta. et al. The biliary atresia susceptibility gene, EFEMP1, regulates extrahepatic bile duct elastic fiber

Important Note: This product as supplied is intended for research use only, not for use in human, therapeutic or diagnostic applications.

- formation and mechanics. JHEP Reports. 2024 Sep;;101215 IF ;Mouse. 10.1016/j.jhepr.2024.101215
- **[IF=6.87]** Konii, Hanae, et al. "Stimulatory Effects of Cardiotrophin 1 on Atherosclerosis."Hypertension?(2013): HYPERTENSIONAHA-113 WB ;="Human". 24041953
 - **[IF=6.17]** Tong Xu. et al. Lithium chloride represses abdominal aortic aneurysm via regulating GSK3 β /SIRT1/NF- κ B signaling pathway. Free Radical Bio Med. 2021 Apr;166:1 WB ;Rat. 33588051
 - **[IF=3.55]** Guo, Hong-Feng, et al. "Piezoelectric PU/PVDF electrospun scaffolds for wound healing applications." Colloids and Surfaces B: Biointerfaces (2012). WB ;="Mouse". 22503631