

GCLM Recombinant Rabbit mAb

Catalog Number: bsm-54141R

Target Protein: GCLM

Concentration: 1mg/ml

Form: Liquid

Host: Rabbit

Clonality: Recombinant

Clone No.: 4G5

Isotype: IgG

Applications: WB (1:500-2000), IHC-P (1:100-500), IHC-F (1:100-500), IF (1:100-500), Flow-Cyt (1:50-100), ICC/IF (1:50-200)

Reactivity: Human, Mouse, Rat

Predicted MW: 31 kDa

Entrez Gene: 2730

Swiss Prot: P48507

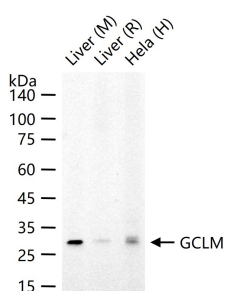
Purification: affinity purified by Protein A

Storage: 0.01M TBS (pH7.4) with 1% BSA, 0.02% Proclin300 and 50% Glycerol.

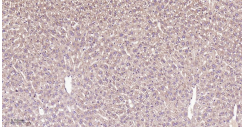
Shipped at 4°C. Store at -20°C for one year. Avoid repeated freeze/thaw cycles.

Background: Glutamate-cysteine ligase, also known as gamma-glutamylcysteine synthetase, is the first rate limiting enzyme of glutathione synthesis. The enzyme consists of two subunits, a heavy catalytic subunit and a light regulatory subunit. Gamma glutamylcysteine synthetase deficiency has been implicated in some forms of hemolytic anemia. Alternative splicing results in multiple transcript variants encoding different isoforms. [provided by RefSeq, Apr 2015]

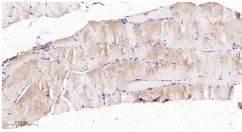
VALIDATION IMAGES



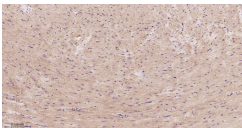
25 ug total protein per lane of various lysates (see on figure) probed with GCLM monoclonal antibody, unconjugated (bsm-54141R) at 1:1000 dilution and 4°C overnight incubation. Followed by conjugated secondary antibody incubation at r.t. for 60 min.



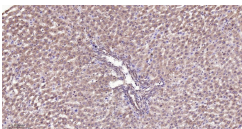
Paraformaldehyde-fixed, paraffin embedded Mouse liver; Antigen retrieval by boiling in sodium citrate buffer (pH6.0) for 15 min; Antibody incubation with GCLM Monoclonal Antibody, Unconjugated(bsm-54141R) at 1:200 overnight at 4°C, followed by conjugation to the bs-0295G-HRP and DAB (C-0010) staining.



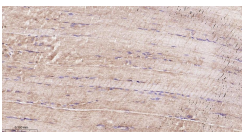
Paraformaldehyde-fixed, paraffin embedded Mouse skeletal muscle; Antigen retrieval by boiling in sodium citrate buffer (pH6.0) for 15 min; Antibody incubation with GCLM Monoclonal Antibody, Unconjugated(bsm-54141R) at 1:200 overnight at 4°C, followed by conjugation to the bs-0295G-HRP and DAB (C-0010) staining.



Paraformaldehyde-fixed, paraffin embedded Mouse heart; Antigen retrieval by boiling in sodium citrate buffer (pH6.0) for 15 min; Antibody incubation with GCLM Monoclonal Antibody, Unconjugated(bsm-54141R) at 1:200 overnight at 4°C, followed by conjugation to the bs-0295G-HRP and DAB (C-0010) staining.



Paraformaldehyde-fixed, paraffin embedded Rat liver; Antigen retrieval by boiling in sodium citrate buffer (pH6.0) for 15 min; Antibody incubation with GCLM Monoclonal Antibody, Unconjugated(bsm-54141R) at 1:200 overnight at 4°C, followed by conjugation to the bs-0295G-HRP and DAB (C-0010) staining.



Paraformaldehyde-fixed, paraffin embedded Rat skeletal muscle; Antigen retrieval by boiling in sodium citrate buffer (pH6.0) for 15 min; Antibody incubation with GCLM Monoclonal Antibody, Unconjugated(bsm-54141R) at 1:200 overnight at 4°C, followed by conjugation to the bs-0295G-HRP and DAB (C-0010) staining.