

bs-23570R**[Primary Antibody]****CXCR5 Rabbit pAb****BioSS**
ANTIBODIES

www.bioss.com.cn

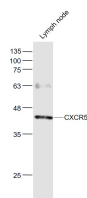
sales@bioss.com.cn

techsupport@bioss.com.cn

400-901-9800

— DATASHEET —

Host: Rabbit	Isotype: IgG	Applications: WB (1:500-2000)
Clonality: Polyclonal		
GeneID: 643	SWISS: P32302	
Target: CXCR5		
Immunogen: KLH conjugated synthetic peptide derived from human CXCR5 : 1-100/372.		
Purification: affinity purified by Protein A		Reactivity: Human, Mouse
Concentration: 1mg/ml		
Storage: 0.01M TBS (pH7.4) with 1% BSA, 0.02% Proclin300 and 50% Glycerol. Shipped at 4°C. Store at -20°C for one year. Avoid repeated freeze/thaw cycles.		Predicted MW.: 45 kDa
Background: This gene encodes a multi-pass membrane protein that belongs to the CXC chemokine receptor family. It is expressed in mature B-cells and Burkitt's lymphoma. This cytokine receptor binds to B-lymphocyte chemoattractant (BLC), and is involved in B-cell migration into B-cell follicles of spleen and Peyer patches. Alternatively spliced transcript variants encoding different isoforms have been described for this gene. [provided by RefSeq, Aug 2011]		Subcellular Location: Cell membrane

— VALIDATION IMAGES —

Sample: Lymph node (Mouse) Lysate at 40 ug
Primary: Anti- CXCR5 (bs-23570R) at 1/1000
dilution Secondary: IRDye800CW Goat Anti-
Rabbit IgG at 1/20000 dilution Predicted band
size: 42 kD Observed band size: 42 kD

— SELECTED CITATIONS —

- **[IF=5.8]** Zhang Kai. et al. Mitochondria-mediated apoptosis and endoplasmic reticulum stress are involved in the toxicity induced by copper in the porcine spleen. ENVIRON SCI POLLUT R. 2023 Aug;:1-12 WB ;Fig. 37542695