

bsm-52369R**[Primary Antibody]**

Bioss
ANTIBODIES

www.bioss.com.cn

sales@bioss.com.cn

techsupport@bioss.com.cn

400-901-9800

PTEN Recombinant Rabbit mAb

— DATASHEET —

Host: Rabbit**Isotype:** IgG**Clonality:** Recombinant**CloneNo.:** 9D2**GeneID:** 5728**SWISS:** P60484**Target:** PTEN**Immunogen:** A synthesized peptide derived from human PTEN: 350-403.**Purification:** affinity purified by Protein A**Concentration:** 1mg/ml

Storage: 0.01M TBS (pH7.4) with 1% BSA, 0.02% Proclin300 and 50% Glycerol.
Shipped at 4°C. Store at -20°C for one year. Avoid repeated freeze/thaw cycles.

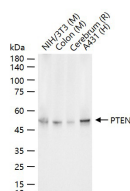
Background: Potential tumor suppressor. Acts as a phosphoinositide3-phosphatase by regulating PtdIns (3,4,5)P3 levels. Involved in regulation of the AKT1 signaling pathway. The unphosphorylated form cooperates with AIP1 to suppress AKT1 activation. The PTEN/MMAC1 discovers the first to have the suppress of the phosphoric acid enzyme activity cancer gene currently. The gene of PTEN locates the chromosome10q23 area, sending forth sex tumor and a few households cancers with the variety to suffer from the comprehensive disease easily relevant. The activity that passes to repress the Akt regulates the cell period, the cell ground rule decrease and glues to connect. This text discussed PTEN structure, function and its correlationses, the PTEN is in tumor repress function mechanism.

Applications: WB (1:500-2000)**IHC-P** (1:100-500)**IHC-F** (1:100-500)**IF** (1:100-500)**Flow-Cyt** (1:20-100)**ICC/IF** (1:50-200)**ELISA** (1:5000-10000)**Reactivity:** Human, Mouse, Rat

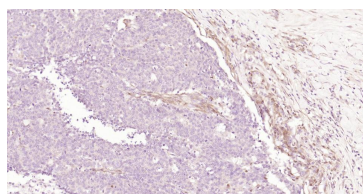
Predicted
MW.: 44 kDa

Subcellular
Location: Cytoplasm ,Nucleus

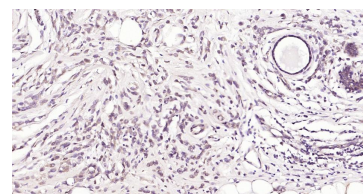
— VALIDATION IMAGES —



25 ug total protein per lane of various lysates (see on figure) probed with PTEN monoclonal antibody, unconjugated (bsm-52369R) at 1:1000 dilution and 4°C overnight incubation. Followed by conjugated secondary antibody incubation at r.t. for 60 min.



Paraformaldehyde-fixed, paraffin embedded Human Esophagus Cancer; Antigen retrieval by boiling in sodium citrate buffer (pH6.0) for 15 min; Antibody incubation with PTEN Monoclonal Antibody, Unconjugated (bsm-52369R) at 1:200 overnight at 4°C, followed by conjugation to the bs-0295G-HRP and DAB (C-0010) staining.



Paraformaldehyde-fixed, paraffin embedded Human Breast Cancer; Antigen retrieval by boiling in sodium citrate buffer (pH6.0) for 15 min; Antibody incubation with PTEN Monoclonal Antibody, Unconjugated (bsm-52369R) at 1:200 overnight at 4°C, followed by conjugation to the bs-0295G-HRP and DAB (C-0010) staining.