

**bsm-60679R****[ Primary Antibody ]****BioSS**  
**ANTIBODIES**

www.bioss.com.cn

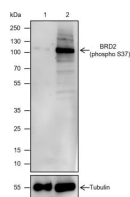
sales@bioss.com.cn

techsupport@bioss.com.cn

400-901-9800

**phospho-BRD2 (Ser37) Recombinant Rabbit mAb****— DATASHEET —**

<b>Host:</b> Rabbit	<b>Isotype:</b> IgG	<b>Applications:</b> WB (1:2000-10000)
<b>Clonality:</b> Recombinant	<b>CloneNo.:</b> R1A12	<b>Reactivity:</b> Human
<b>GeneID:</b> 6046	<b>SWISS:</b> P25440	
<b>Target:</b> BRD2 (Ser37)		
<b>Purification:</b> affinity purified by Protein A		
<b>Concentration:</b> 1mg/ml		
<b>Storage:</b> 0.01M TBS (pH7.4) with 1% BSA, 0.02% Proclin300 and 50% Glycerol. Shipped at 4°C. Store at -20°C for one year. Avoid repeated freeze/thaw cycles.		
<b>Background:</b> This gene encodes a transcriptional regulator that belongs to the BET (bromodomains and extra terminal domain) family of proteins. This protein associates with transcription complexes and with acetylated chromatin during mitosis, and it selectively binds to the acetylated lysine-12 residue of histone H4 via its two bromodomains. The gene maps to the major histocompatibility complex (MHC) class II region on chromosome 6p21.3, but sequence comparison suggests that the protein is not involved in the immune response. This gene has been implicated in juvenile myoclonic epilepsy, a common form of epilepsy that becomes apparent in adolescence. Multiple alternatively spliced variants have been described for this gene. [provided by RefSeq, Dec 2010]		
		<b>Predicted MW.:</b> 88 kDa
		<b>Subcellular Location:</b> Nucleus

**— VALIDATION IMAGES —**

Blocking buffer: 5% NFDm/TBST Primary Ab  
dilution: 1:20000 Primary Ab incubation  
condition: 2 hours at room temperature  
Secondary Ab: Goat Anti-Rabbit IgG H&L (HRP)  
Lysate: 1: HEK-293T, 2: HEK-293T + Calyculin A  
(100 nM, 60 min) Protein loading quantity: 20 µg  
Exposure time: 60 s Predicted MW: 88 kDa  
Observed MW: 110 kDa