

bsm-60678R**[Primary Antibody]****BioSS**
ANTIBODIES

www.bioss.com.cn

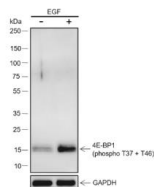
sales@bioss.com.cn

techsupport@bioss.com.cn

400-901-9800

phospho-eIF4EBP1 (Thr37 / Thr46) Recombinant Rabbit mAb**— DATASHEET —**

Host: Rabbit	Isotype: IgG	Applications: WB (1:500-2000)
Clonality: Recombinant	CloneNo.: R2D8	Reactivity: Human
GeneID: 1978	SWISS: Q13541	
Target: eIF4EBP1 (Thr37 / Thr46)		
Purification: affinity purified by Protein A		
Concentration: 1mg/ml		Predicted MW.: 13 kDa
Storage: 0.01M TBS (pH7.4) with 1% BSA, 0.02% Proclin300 and 50% Glycerol. Shipped at 4°C. Store at -20°C for one year. Avoid repeated freeze/thaw cycles.		Subcellular Location: Cytoplasm ,Nucleus
Background: This gene encodes one member of a family of translation repressor proteins. The protein directly interacts with eukaryotic translation initiation factor 4E (eIF4E), which is a limiting component of the multisubunit complex that recruits 40S ribosomal subunits to the 5' end of mRNAs. Interaction of this protein with eIF4E inhibits complex assembly and represses translation. This protein is phosphorylated in response to various signals including UV irradiation and insulin signaling, resulting in its dissociation from eIF4E and activation of mRNA translation. [provided by RefSeq, Jul 2008].		

— VALIDATION IMAGES —

Blocking buffer: 5% NFDM/TBST Primary Ab
dilution: 1:1000 Primary Ab incubation
condition: 2 hours at room temperature
Secondary Ab: Goat Anti-Rabbit IgG H&L (HRP)
Lysate: (-): HEK-293, (+): HEK-293 + EGF (200 ng/mL, 10 min) Protein loading quantity: 20 µg
Exposure time: 60 s Predicted MW: 13 kDa
Observed MW: 15 kDa