

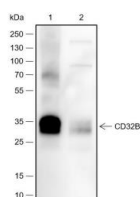
bsm-60674R**[Primary Antibody]****Bioss**
ANTIBODIES

www.bioss.com.cn

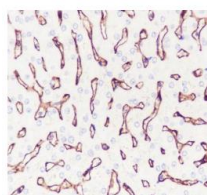
sales@bioss.com.cn

techsupport@bioss.com.cn

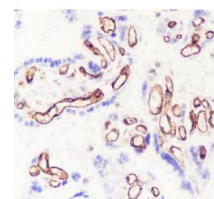
400-901-9800

CD32 Recombinant Rabbit mAb**— DATASHEET —****Host:** Rabbit**Clonality:** Recombinant**GeneID:** 2213**Target:** CD32**Purification:** affinity purified by Protein A**Concentration:** 1mg/ml**Storage:** 0.01M TBS (pH7.4) with 1% BSA, 0.02% Proclin300 and 50% Glycerol.
Shipped at 4°C. Store at -20°C for one year. Avoid repeated freeze/thaw cycles.**Background:** The protein encoded by this gene is a low affinity receptor for the Fc region of immunoglobulin gamma complexes. The encoded protein is involved in the phagocytosis of immune complexes and in the regulation of antibody production by B-cells. Variations in this gene may increase susceptibility to systemic lupus erythematosus (SLE). Several transcript variants encoding different isoforms have been found for this gene. [provided by RefSeq, Jun 2010]**Isotype:** IgG**CloneNo.:** R8F6**SWISS:** P31994**Applications:** WB (1:500-1000)**IHC-P** (1:100-500)**IHC-F** (1:200-400)**IF** (1:100-500)**Reactivity:** Human (predicted: Mouse, Rat)**Predicted MW.:** 31 kDa**Subcellular Location:** Cell membrane**— VALIDATION IMAGES —**

Blocking buffer: 5% NFDM/TBST Primary Ab dilution: 1:1000 Primary Ab incubation condition: 2 hours at room temperature
Secondary Ab: Goat Anti-Rabbit IgG H&L (HRP)
Lysate: 1: Human placenta, 2: Human liver
Protein loading quantity: 20 µg Exposure time: 60 s Predicted MW: 34 kDa Observed MW: 34 kDa



Tissue: Human liver Section type: Formalin-fixed & Paraffin-embedded section Retrieval method: High temperature and high pressure Retrieval buffer: Tris/EDTA buffer, pH 9.0 Primary Ab dilution: 1:1000 Primary Ab incubation condition: 1 hour at room temperature
Secondary Ab: Anti-Rabbit and Mouse Polymer HRP (Ready to use) Counter stain: Hematoxylin (Blue) Comment: Color brown is the positive signal for bsm-60674R



Tissue: Human placenta Section type: Formalin-fixed & Paraffin-embedded section Retrieval method: High temperature and high pressure Retrieval buffer: Tris/EDTA buffer, pH 9.0 Primary Ab dilution: 1:1000 Primary Ab incubation condition: 1 hour at room temperature
Secondary Ab: Anti-Rabbit and Mouse Polymer HRP (Ready to use) Counter stain: Hematoxylin (Blue) Comment: Color brown is the positive signal for