

bsm-60669R**[Primary Antibody]****SIRT6 Recombinant Rabbit mAb****Bioss**
ANTIBODIES

www.bioss.com.cn

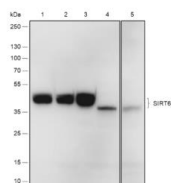
sales@bioss.com.cn

techsupport@bioss.com.cn

400-901-9800

DATASHEET

Host: Rabbit	Isotype: IgG	Applications: WB (1:200-1000) Reactivity: Human (predicted: Mouse, Rat) Predicted MW.: 39 kDa Subcellular Location: Nucleus
Clonality: Recombinant	CloneNo.: R4G8	
GeneID: 51548	SWISS: Q8N6T7	
Target: SIRT6		
Purification: affinity purified by Protein A		
Concentration: 1mg/ml		
Storage: 0.01M TBS (pH7.4) with 1% BSA, 0.02% Proclin300 and 50% Glycerol. Shipped at 4°C. Store at -20°C for one year. Avoid repeated freeze/thaw cycles.		
Background: This gene encodes a member of the sirtuin family of NAD-dependent enzymes that are implicated in cellular stress resistance, genomic stability, aging and energy homeostasis. The encoded protein is localized to the nucleus, exhibits ADP-ribosyl transferase and histone deacetylase activities, and plays a role in DNA repair, maintenance of telomeric chromatin, inflammation, lipid and glucose metabolism. Alternative splicing results in multiple transcript variants encoding different isoforms. [provided by RefSeq, Mar 2016]		

VALIDATION IMAGES

Blocking buffer: 5% NFDm/TBST Primary Ab
dilution: 1:1000 Primary Ab incubation
condition: 2 hours at room temperature
Secondary Ab: Goat Anti-Rabbit IgG H&L (HRP)
Lysate: 1: HCT-116, 2: HeLa, 3: Jurkat, 4: C2C12,
5: PC-12 Protein loading quantity: 20 µg
Exposure time: 60 s Predicted MW: 39 kDa
Observed MW: 42 kDa