

**bsm-60668R****[ Primary Antibody ]****CSNK1G2 Recombinant Rabbit mAb****BioSS**  
**ANTIBODIES**

www.bioss.com.cn

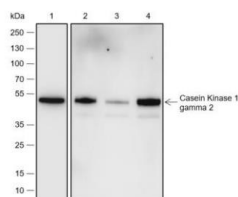
sales@bioss.com.cn

techsupport@bioss.com.cn

400-901-9800

**— DATASHEET —**

<b>Host:</b> Rabbit	<b>Isotype:</b> IgG	<b>Applications:</b> WB (1:500-2000) <b>Flow-Cyt</b> (1:50-100) <b>ICC/IF</b> (1:50-100)  <b>Reactivity:</b> Human (predicted: Mouse, Rat)  <b>Predicted MW.:</b> 47 kDa  <b>Subcellular Location:</b> Cytoplasm
<b>Clonality:</b> Recombinant	<b>CloneNo.:</b> R8G7	
<b>GeneID:</b> 1455	<b>SWISS:</b> P78368	
<b>Target:</b> CSNK1G2		
<b>Purification:</b> affinity purified by Protein A		
<b>Concentration:</b> 1mg/ml		
<b>Storage:</b> 0.01M TBS (pH7.4) with 1% BSA, 0.02% Proclin300 and 50% Glycerol. Shipped at 4°C. Store at -20°C for one year. Avoid repeated freeze/thaw cycles.		
<b>Background:</b> Enables protein serine/threonine kinase activity. Involved in peptidyl-serine phosphorylation. Located in membrane. [provided by Alliance of Genome Resources, Apr 2022]		

**— VALIDATION IMAGES —**

Blocking buffer: 5% NFDM/TBST Primary Ab  
dilution: 1:5000 Primary Ab incubation  
condition: 2 hours at room temperature  
Secondary Ab: Goat Anti-Rabbit IgG H&L (HRP)  
Lysate: 1: HeLa, 2: 4T1, 3: RAW 264.7, 4: Rat brain  
Protein loading quantity: 20 µg Exposure time:  
60 s Predicted MW: 50 kDa Observed MW: 50 kDa