

bsm-60665R**[Primary Antibody]**

Bioss
ANTIBODIES

www.bioss.com.cn

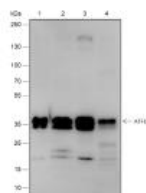
sales@bioss.com.cn

techsupport@bioss.com.cn

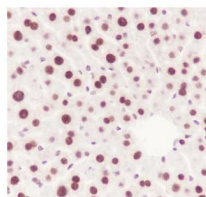
400-901-9800

ATF1 Recombinant Rabbit mAb**— DATASHEET —**

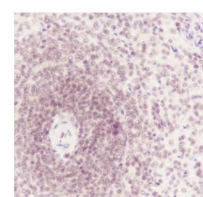
Host: Rabbit	Isotype: IgG	Applications: WB (1:1000-5000) IHC-P (1:100-500) IHC-F (1:400-1000) IF (1:50) Reactivity: Human, Mouse, Rat Predicted MW.: 29 kDa Subcellular Location: Nucleus
Clonality: Recombinant	CloneNo.: R10B4	
GeneID: 466	SWISS: P18846	
Target: ATF1		
Purification: affinity purified by Protein A		
Concentration: 1mg/ml		
Storage: 0.01M TBS (pH7.4) with 1% BSA, 0.02% Proclin300 and 50% Glycerol. Shipped at 4°C. Store at -20°C for one year. Avoid repeated freeze/thaw cycles.		
Background: This gene encodes an activating transcription factor, which belongs to the ATF subfamily and bZIP (basic-region leucine zipper) family. It influences cellular physiologic processes by regulating the expression of downstream target genes, which are related to growth, survival, and other cellular activities. This protein is phosphorylated at serine 63 in its kinase-inducible domain by serine/threonine kinases, cAMP-dependent protein kinase A, calmodulin-dependent protein kinase I/II, mitogen- and stress-activated protein kinase and cyclin-dependent kinase 3 (cdk-3). Its phosphorylation enhances its transactivation and transcriptional activities, and enhances cell transformation. Fusion of this gene and FUS on chromosome 16 or EWSR1 on chromosome 22 induced by translocation generates chimeric proteins in angiomatoid fibrous histiocytoma and clear cell sarcoma. This gene has a pseudogene on chromosome 6. [provided by RefSeq, Aug 2010]		

— VALIDATION IMAGES —

Blocking buffer: 5% NFDM/TBST Primary Ab dilution: 1:1000 Primary Ab incubation condition: 2 hours at room temperature Secondary Ab: Goat Anti-Rabbit IgG H&L (HRP) Lysate: 1: HeLa, 2: HCT-116, 3: K562, 4: HepG2 Protein loading quantity: 20 µg Exposure time: 60 s Predicted MW: 29 kDa Observed MW: 35 kDa



Tissue: Mouse liver Section type: Formalin-fixed & Paraffin embedded section Retrieval method: High temperature and high pressure Retrieval buffer: Tris/EDTA buffer, pH 9.0 Primary Ab dilution: 1:100 Primary Ab incubation condition: 1 hour at room temperature Secondary Ab: Anti-Rabbit and Mouse Polymer HRP (Ready to use) Counter stain: Hematoxylin (Blue) Comment: Color brown is the positive signal for bsm-60665R



Tissue: Human spleen Section type: Formalin-fixed & Paraffin embedded section Retrieval method: High temperature and high pressure Retrieval buffer: Tris/EDTA buffer, pH 9.0 Primary Ab dilution: 1:1000 Primary Ab incubation condition: 1 hour at room temperature Secondary Ab: Anti-Rabbit and Mouse Polymer HRP (Ready to use) Counter stain: Hematoxylin (Blue) Comment: Color brown is the positive signal for bsm-60665R