

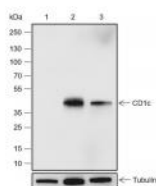
**bsm-60660R****[ Primary Antibody ]****Bioss**  
**ANTIBODIES**

www.bioss.com.cn

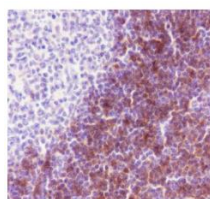
sales@bioss.com.cn

techsupport@bioss.com.cn

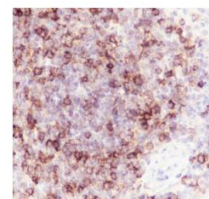
400-901-9800

**CD1c Recombinant Rabbit mAb****— DATASHEET —****Host:** Rabbit**Isotype:** IgG**Clonality:** Recombinant**CloneNo.:** R6C8**GeneID:** 911**Target:** CD1c**Purification:** affinity purified by Protein A**Concentration:** 1mg/ml**Storage:** 0.01M TBS (pH7.4) with 1% BSA, 0.02% Proclin300 and 50% Glycerol.  
Shipped at 4°C. Store at -20°C for one year. Avoid repeated freeze/thaw cycles.**Background:** This gene encodes a member of the CD1 family of transmembrane glycoproteins, which are structurally related to the major histocompatibility complex (MHC) proteins and form heterodimers with beta-2-microglobulin. The CD1 proteins mediate the presentation of primarily lipid and glycolipid antigens of self or microbial origin to T cells. The human genome contains five CD1 family genes organized in a cluster on chromosome 1. The CD1 family members are thought to differ in their cellular localization and specificity for particular lipid ligands. The protein encoded by this gene is broadly distributed throughout the endocytic system via a tyrosine-based motif in the cytoplasmic tail. Alternatively spliced transcript variants of this gene have been observed, but their full-length nature is not known. [provided by RefSeq, Jul 2008]**Applications:** **WB** (1:500-1000)  
**IHC-P** (1:100-500)  
**IHC-F** (1:50-100)  
**IF** (1:50)**Reactivity:** Human**Predicted MW.:** 36 kDa**Subcellular Location:** Cell membrane**— VALIDATION IMAGES —**

Blocking buffer: 5% NFDM/TBST Primary Ab dilution: 1:2000 Primary Ab incubation condition: 2 hours at room temperature  
Secondary Ab: Goat Anti-Rabbit IgG H&L (HRP)  
Lysate: 1: THP-1 (Negative control), 2: MOLT-4, 3: Jurkat Protein loading quantity: 20 µg Exposure time: 60 s Predicted MW: 38 kDa Observed MW: 43 kDa



Tissue: Human tonsil Section type: Formalin-fixed & Paraffin-embedded section Retrieval method: High temperature and high pressure Retrieval buffer: Tris/EDTA buffer, pH 9.0 Primary Ab dilution: 1:100 Primary Ab incubation condition: 1 hour at room temperature  
Secondary Ab: Anti-Rabbit and Mouse Polymer HRP (Ready to use) Counter stain: Hematoxylin (Blue) Comment: Color brown is the positive signal for bsm-60660R



Tissue: Human spleen Section type: Formalin-fixed & Paraffin-embedded section Retrieval method: High temperature and high pressure Retrieval buffer: Tris/EDTA buffer, pH 9.0 Primary Ab dilution: 1:100 Primary Ab incubation condition: 1 hour at room temperature  
Secondary Ab: Anti-Rabbit and Mouse Polymer HRP (Ready to use) Counter stain: Hematoxylin (Blue) Comment: Color brown is the positive signal for bsm-60660R