

bsm-60646R**[Primary Antibody]**

www.bioss.com.cn

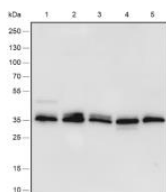
sales@bioss.com.cn

techsupport@bioss.com.cn

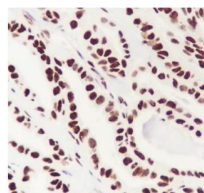
400-901-9800

DUSP5 Recombinant Rabbit mAb**— DATASHEET —**

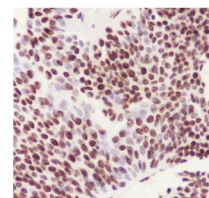
Host: Rabbit	Isotype: IgG	Applications: WB (1:200-1000) IHC-P (1:100-500) IHC-F (1:200-500) IF (1:100-500) Reactivity: Human (predicted: Mouse, Rat) Predicted MW.: 42 kDa Subcellular Location: Nucleus
Clonality: Recombinant	CloneNo.: R1A10	
GeneID: 1847	SWISS: Q16690	
Target: DUSP5		
Purification: affinity purified by Protein A		
Concentration: 1mg/ml		
Storage: 0.01M TBS (pH7.4) with 1% BSA, 0.02% Proclin300 and 50% Glycerol. Shipped at 4°C. Store at -20°C for one year. Avoid repeated freeze/thaw cycles.		
Background: The protein encoded by this gene is a member of the dual specificity protein phosphatase subfamily. These phosphatases inactivate their target kinases by dephosphorylating both the phosphoserine/threonine and phosphotyrosine residues. They negatively regulate members of the mitogen-activated protein (MAP) kinase superfamily (MAPK/ERK, SAPK/JNK, p38), which are associated with cellular proliferation and differentiation. Different members of the family of dual specificity phosphatases show distinct substrate specificities for various MAP kinases, different tissue distribution and subcellular localization, and different modes of inducibility of their expression by extracellular stimuli. This gene product inactivates ERK1, is expressed in a variety of tissues with the highest levels in pancreas and brain, and is localized in the nucleus. [provided by RefSeq, Jul 2008]		

— VALIDATION IMAGES —

Blocking buffer: 5% NFDN/TBST Primary Ab dilution: 1:1000 Primary Ab incubation condition: 2 hours at room temperature Secondary Ab: Goat Anti-Rabbit IgG H&L (HRP) Lysate: 1: HCT-116, 2: Raji, 3: K562, 4: C2C12, 5: PC12 Protein loading quantity: 20 ug Exposure time: 60 s Predicted MW: 42 kDa Observed MW: 42 kDa



Tissue: Human papillary thyroid carcinoma Section type: Formalin-fixed & Paraffin-embedded section Retrieval method: High temperature and high pressure Retrieval buffer: Tris/EDTA buffer, pH 9.0 Primary Ab dilution: 1:1000 Primary Ab incubation condition: 1 hour at room temperature Secondary Ab: Anti-Rabbit and Mouse Polymer HRP (Ready to use) Counter stain: Hematoxylin (Blue) Comment: Color brown is the positive signal for bsm-60646R



Tissue: Human bladder carcinoma Section type: Formalin-fixed & Paraffin-embedded section Retrieval method: High temperature and high pressure Retrieval buffer: Tris/EDTA buffer, pH 9.0 Primary Ab dilution: 1:1000 Primary Ab incubation condition: 1 hour at room temperature Secondary Ab: Anti-Rabbit and Mouse Polymer HRP (Ready to use) Counter stain: Hematoxylin (Blue) Comment: Color brown is the positive signal for bsm-60646R

— SELECTED CITATIONS —

- **[IF=4.8]** Fei Wang. et al. Glabridin inhibits proliferation and migration in hepatocellular carcinoma by regulating multi-targets. J ETHNOPHARMACOL. 2024 Nov;;119022 WB ;Human. 39510424