

---

## AMHR2 Rabbit pAb

Catalog Number: bs-43109R

Target Protein: AMHR2

Concentration: 1mg/ml

Form: Liquid

Host: Rabbit

Clonality: Polyclonal

Isotype: IgG

Applications: IHC-P (1:100-500), IHC-F (1:400-800), IF (1:100-500)

Reactivity: Rat (predicted:Human, Mouse)

Predicted MW: 61 kDa

Entrez Gene: 269

Swiss Prot: Q16671

Source: Recombinant human MISRII protein: 18-149/573.

Purification: affinity purified by Protein A

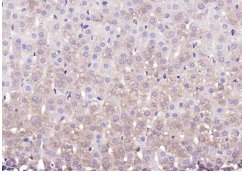
Storage: 0.01M TBS (pH7.4) with 1% BSA, 0.02% Proclin300 and 50% Glycerol.

Shipped at 4°C. Store at -20°C for one year. Avoid repeated freeze/thaw cycles.

**Background:** MISR II is a 573 amino acid protein encoded by the human gene AMHR2. MISR II belongs to the protein kinase superfamily, TKL Ser/Thr protein kinase family, TGFB receptor subfamily and contains one protein kinase domain. Upon ligand binding, MISR II forms a receptor complex consisting of two type II and two type I transmembrane serine/threonine kinases. These type II receptors phospho-rylate and activate type I receptors which autophosphorylate, then bind and activate Smad transcriptional regulators. MISR II also acts as a receptor for anti-Muellerian hormone. Defects in AMHR2 are the cause of persistent Muellerian duct syndrome type 2 (PMDS-2). PMDS-2 is a form of male pseudo-hermaphroditism characterized by a failure of Muellerian duct regression in otherwise normal males.

### VALIDATION IMAGES

---



Paraformaldehyde-fixed, paraffin embedded (rat adrenal gland); Antigen retrieval by boiling in sodium citrate buffer (pH6.0) for 15min; Block endogenous peroxidase by 3% hydrogen peroxide for 20 minutes; Blocking buffer (normal goat serum) at 37°C for 30min; Antibody incubation with (AMHR2) Polyclonal Antibody, Unconjugated (bs-43109R) at 1:200 overnight at 4°C, followed by operating according to SP Kit(Rabbit) (sp-0023) instructions and DAB staining.