

bs-43100R**[Primary Antibody]****PRLR Rabbit pAb****BioSS**
ANTIBODIES

www.bioss.com.cn

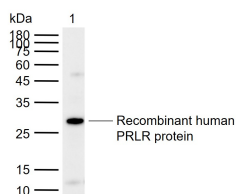
sales@bioss.com.cn

techsupport@bioss.com.cn

400-901-9800

— DATASHEET —

Host: Rabbit	Isotype: IgG	Applications: WB (1:500-2000)
Clonality: Polyclonal		
GeneID: 5618	SWISS: P16471	
Target: PRLR		
Immunogen: Recombinant human PRL-R protein: 25-234/622.		
Purification: affinity purified by Protein A		
Concentration: 1mg/ml		Reactivity: Human (predicted: Mouse, Rat)
Storage: 0.01M TBS (pH7.4) with 1% BSA, 0.02% Proclin300 and 50% Glycerol. Shipped at 4°C. Store at -20°C for one year. Avoid repeated freeze/thaw cycles.		Predicted MW.: 67 kDa
Background: This gene encodes a receptor for the anterior pituitary hormone, prolactin, and belongs to the type I cytokine receptor family. Prolactin-dependent signaling occurs as the result of ligand-induced dimerization of the prolactin receptor. Several alternatively spliced transcript variants encoding different membrane-bound and soluble isoforms have been described for this gene, which may function to modulate the endocrine and autocrine effects of prolactin in normal tissue and cancer. [provided by RefSeq, Feb 2011].		Subcellular Location: Secreted ,Cell membrane

— VALIDATION IMAGES —

Sample: Lane 1: Recombinant human PRLR protein, N-His(bs-42268P) Primary: Anti-PRLR (bs-43100R) at 1/1000 dilution Secondary: IRDye800CW Goat Anti-Rabbit IgG at 1/20000 dilution Predicted band size: 67 kDa Observed band size: 28 kDa