

bsm-54278R**[Primary Antibody]****HIF-2 alpha Recombinant Rabbit mAb****Bioss**
ANTIBODIES

www.bioss.com.cn

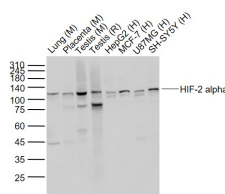
sales@bioss.com.cn

techsupport@bioss.com.cn

400-901-9800

DATASHEET

Host: Rabbit	Isotype: IgG	Applications: WB (1:500-2000) Flow-Cyt (1:20-50) ICC/IF (1:50-200) Reactivity: Human, Mouse, Rat Predicted MW.: 96 kDa Subcellular Location: Cytoplasm ,Nucleus
Clonality: Recombinant	CloneNo.: 2G3	
GeneID: 2034	SWISS: Q99814	
Target: HIF-2 alpha		
Immunogen: A synthesized peptide derived from human HIF 2 alpha: 52-108.		
Purification: affinity purified by Protein A		
Concentration: 1mg/ml		
Storage: 0.01M TBS (pH7.4) with 1% BSA, 0.02% Proclin300 and 50% Glycerol. Shipped at 4°C. Store at -20°C for one year. Avoid repeated freeze/thaw cycles.		
Background: Transcription factor involved in the induction of oxygen regulated genes. Binds to core DNA sequence 5'-[AG]CGTG-3' within the hypoxia response element (HRE) of target gene promoters. Regulates the vascular endothelial growth factor (VEGF) expression and seems to be implicated in the development of blood vessels and the tubular system of lung. May also play a role in the formation of the endothelium that gives rise to the blood brain barrier. Potent activator of the Tie-2 tyrosine kinase expression. Activation requires recruitment of transcriptional coactivators such as CREBBP and probably EP300. Interaction with redox regulatory protein APEX seems to activate CTAD.		

VALIDATION IMAGES

Sample: Lane 1: Lung (Mouse) Lysate at 40 ug
 Lane 2: Placenta (Mouse) Lysate at 40 ug Lane 3:
 Testis (Mouse) Lysate at 40 ug Lane 4: Testis
 (Rat) Lysate at 40 ug Lane 5: HepG2 (Human) Cell
 Lysate at 30 ug Lane 6: MCF-7 (Human) Cell
 Lysate at 30 ug Lane 7: U87MG (Human) Cell
 Lysate at 30 ug Lane 8: SH-SY5Y (Human) Cell
 Lysate at 30 ug Primary: Anti-HIF-2 alpha
 (bsm-54278R) at 1/1000 dilution Secondary:
 IRDye800CW Goat Anti-Rabbit IgG at 1/20000
 dilution Predicted band size: 120 kD Observed
 band size: 120 kD