

bsm-43099M**[Primary Antibody]**

www.bioss.com.cn

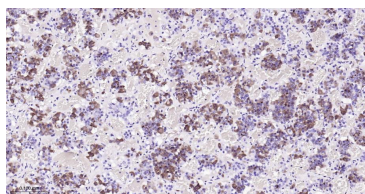
sales@bioss.com.cn

techsupport@bioss.com.cn

400-901-9800

PRL Mouse mAb**— DATASHEET —**

Host: Mouse	Isotype: IgG	Applications: IHC-P (1:100-500) IHC-F (1:100-500) IF (1:100-500) Reactivity: Human Predicted MW.: 24 kDa Subcellular Location: Secreted
Clonality: Monoclonal	CloneNo.: 1H7	
GeneID: 5617	SWISS: P01236	
Target: PRL		
Immunogen: Recombinant human PRL protein: 29-227/227.		
Purification: affinity purified by Protein A		
Concentration: 1mg/ml		
Storage: Size : 50ul/100ul/200ul 0.01M TBS (pH7.4) with 1% BSA, 0.02% Proclin300 and 50% Glycerol. Size : 200ug (PBS only) 0.01M PBS Shipped at 4°C. Store at -20°C for one year. Avoid repeated freeze/thaw cycles.		
Background: This gene encodes the anterior pituitary hormone prolactin. This secreted hormone is a growth regulator for many tissues, including cells of the immune system. It may also play a role in cell survival by suppressing apoptosis, and it is essential for lactation. Alternative splicing results in multiple transcript variants that encode the same protein. [provided by RefSeq, Aug 2011].		

— VALIDATION IMAGES —

Paraformaldehyde-fixed, paraffin embedded Human pituitary; Antigen retrieval by boiling in sodium citrate buffer (pH6.0) for 15 min; The section was incubated with PRL Monoclonal Antibody, Unconjugated (bsm-43099M) at 1:200 overnight at 4°C, followed by conjugation to the bs-40296G-HRP and DAB (C-0010) staining.