

bsm-43094M**[Primary Antibody]****beta 2 Microglobulin Mouse mAb****BioSS**
ANTIBODIES

www.bioss.com.cn

sales@bioss.com.cn

techsupport@bioss.com.cn

400-901-9800

DATASHEET**Host:** Mouse**Clonality:** Monoclonal**GeneID:** 567**Target:** beta 2 Microglobulin**Immunogen:** Recombinant human Beta-2-microglobulin: 21-119/119.**Purification:** affinity purified by Protein A**Concentration:** 1mg/ml**Storage:** Size : 50ul/100ul/200ul

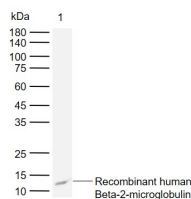
PBS.

Size : 200ug (PBS only)

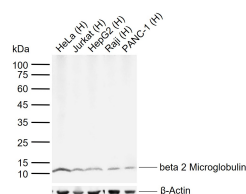
0.01M PBS

Shipped at 4°C. Store at -20°C for one year. Avoid repeated freeze/thaw cycles.

Background: This gene encodes a serum protein found in association with the major histocompatibility complex (MHC) class I heavy chain on the surface of nearly all nucleated cells. The protein has a predominantly beta-pleated sheet structure that can form amyloid fibrils in some pathological conditions. A mutation in this gene has been shown to result in hypercatabolic hypoproteinemia.[provided by RefSeq, Sep 2009].

Isotype: IgG**CloneNo.:** 6A10**SWISS:** P61769**Applications:** WB (1:500-2000)**Reactivity:** Human**Predicted
MW.:** 12 kDa**Subcellular
Location:** Secreted**VALIDATION IMAGES**

Sample: Lane 1: Recombinant human Beta-2-microglobulin, C-His (HEK293) Primary: Anti-beta 2 Microglobulin (bsm-43094M) at 1/1000 dilution Secondary: IRDye800CW Goat Anti-Mouse IgG at 1/20000 dilution Predicted band size: 12 kDa Observed band size: 12 kDa



Sample: Lane 1: Human HeLa cell lysates Lane 2: Human Jurkat cell lysates Lane 3: Human HepG2 cell lysates Lane 4: Human Raji cell lysates Lane 5: Human PANC-1 cell lysates Primary: Anti-beta 2 Microglobulin (bsm-43094M) at 1/1000 dilution Secondary: IRDye800CW Goat Anti-Mouse IgG at 1/20000 dilution Predicted band size: 12 kDa Observed band size: 12 kDa