

bsm-51529M**[Primary Antibody]****CYP3A4 Mouse mAb****Bioss**
ANTIBODIES

www.bioss.com.cn

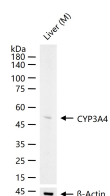
sales@bioss.com.cn

techsupport@bioss.com.cn

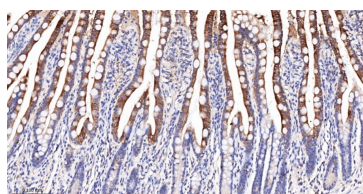
400-901-9800

— DATASHEET —**Host:** Mouse**Isotype:** IgM**Clonality:** Monoclonal**CloneNo.:** D12E2**GeneID:** 1576**SWISS:** P08684**Target:** CYP3A4**Immunogen:** KLH conjugated synthetic peptide derived from human CYP3A4: 201-300/503.**Purification:** affinity purified by Protein G**Concentration:** 1mg/ml**Storage:** 0.01M TBS (pH7.4) with 1% BSA, 0.02% Proclin300 and 50% Glycerol.

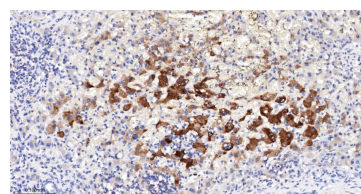
Shipped at 4°C. Store at -20°C for one year. Avoid repeated freeze/thaw cycles.

Background: CYP3A proteins are P450 monooxygenases and in animals, P450 enzymes serve two major functions: biosynthesis of steroids, fatty acids and bile acids, and the metabolism of endogenous and exogenous substrates. A wide variety of exogenous substrates are metabolized by P450 enzymes, including toxins and drugs. The four major families involved in drug metabolism are CYP1, 2, 3 and 4. The hepatic CYP3A1 protein is detected throughout ciliated and nonciliated cells in seven-day-old rats, and is only detected in the apex of these cells in adult rats. Rat CYP3A1 and CYP3A2 share 89% homology, but differ by three out of five of their C-terminal residues.**Applications:** WB (1:500-2000)**IHC-P** (1:100-500)**IHC-F** (1:100-500)**IF** (1:100-500)**Reactivity:** Human, Mouse, Rat**Predicted**
MW.: 55 kDa**Subcellular**
Location: Cell membrane ,Cytoplasm**— VALIDATION IMAGES —**

25 ug total protein per lane of various lysates (see on figure) probed with CYP3A4 monoclonal antibody, unconjugated (bsm-51529M) at 1:2000 dilution and 4°C overnight incubation. Followed by conjugated secondary antibody incubation at r.t. for 60 min.



Paraformaldehyde-fixed, paraffin embedded Human Small Intestine; Antigen retrieval by boiling in sodium citrate buffer (pH6.0) for 15 min; The section was incubated with CYP3A4 Monoclonal Antibody, Unconjugated (bsm-51529M) at 1:400 overnight at 4°C, followed by conjugation to the bs-40296G-HRP and DAB (C-0010) staining.



Paraformaldehyde-fixed, paraffin embedded Human Liver Cancer; Antigen retrieval by boiling in sodium citrate buffer (pH6.0) for 15 min; The section was incubated with CYP3A4 Monoclonal Antibody, Unconjugated (bsm-51529M) at 1:400 overnight at 4°C, followed by conjugation to the bs-40296G-HRP and DAB (C-0010) staining.