

**bsm-51752M****[ Primary Antibody ]****GDF15 Mouse mAb****Bioss**  
**ANTIBODIES**

www.bioss.com.cn

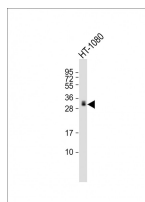
sales@bioss.com.cn

techsupport@bioss.com.cn

400-901-9800

**— DATASHEET —**

<b>Host:</b> Mouse	<b>Isotype:</b> IgG1, k	<b>Applications:</b> WB (1:500-2000)  <b>Reactivity:</b> Human  <b>Predicted MW.:</b> 12.5/34 kDa  <b>Subcellular Location:</b> Secreted
<b>Clonality:</b> Monoclonal	<b>CloneNo.:</b> G7F6	
<b>GeneID:</b> 9518	<b>SWISS:</b> Q99988	
<b>Target:</b> GDF15		
<b>Purification:</b> affinity purified by Protein G		
<b>Concentration:</b> 1mg/ml		
<b>Storage:</b> 0.01M TBS (pH7.4) with 1% BSA, 0.02% Proclin300 and 50% Glycerol. Shipped at 4°C. Store at -20°C for one year. Avoid repeated freeze/thaw cycles.		
<b>Background:</b> Growth differentiation factor 15 (GDF15) is a member of the bone morphogenetic protein (BMP) family and the TGF-beta superfamily. It has been implicated in a variety of functions directly related to tumorigenicity including antiproliferative and pro-apoptotic effects. BMP proteins are secreted growth factors that are characterized by seven conserved cysteine residues. In general, they are regulators of cell growth and differentiation in both embryonic and adult tissues. GDF15 is an important downstream mediator of DNA damage signaling and a transcriptional target of p53.		

**— VALIDATION IMAGES —**

Sample: Lane 1: HT-1080 cell lysates Primary:  
Anti-GDF15 (bsm-51751M) at 1/4000 dilution  
Secondary: IRDye800CW Goat Anti-Mouse IgG at  
1/20000 dilution Predicted band size: 12.5/34 kD  
Observed band size: 32 kD