

bs-24459R**[Primary Antibody]****Bioss**
ANTIBODIES

www.bioss.com.cn

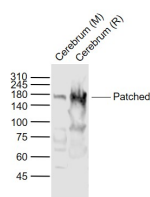
sales@bioss.com.cn

techsupport@bioss.com.cn

400-901-9800

Patched Rabbit pAb**— DATASHEET —**

Host: Rabbit	Isotype: IgG	Applications: WB (1:500-2000)
Clonality: Polyclonal		Reactivity: Mouse, Rat (predicted: Human, Pig)
GeneID: 5727	SWISS: Q13635	
Target: Patched		
Immunogen: KLH conjugated synthetic peptide derived from human Patched: 1-100/1447. < Cytoplasmic >		Predicted MW.: 161 kDa
Purification: affinity purified by Protein A		Subcellular Location: Cell membrane
Concentration: 1mg/ml		
Storage: 0.01M TBS (pH7.4) with 1% BSA, 0.02% Proclin300 and 50% Glycerol. Shipped at 4°C. Store at -20°C for one year. Avoid repeated freeze/thaw cycles.		
Background: PTCH (Patched protein homolog 1) is a receptor for sonic hedgehog (SHH), indian hedgehog (IHH) and desert hedgehog (DHH). PTCH associates with the smoothened protein (SMO) to transduce the hedgehog's proteins signal. PTCH has a tumor suppressor function, as inactivation of this protein is probably a necessary, if not sufficient step for tumorigenesis. PTCH is expressed in the adult brain, lung, liver, heart, placenta, skeletal muscle, pancreas and kidney. It is also expressed in tumor cells but not in normal skin. During development PTCH is found in all major target tissues of sonic hedgehog, such as the ventral neural tube, somites, and tissues surrounding the zone of polarizing activity of the limb bud. Defects in PTCH are probably the cause of basal cell nevus syndrome also known as Gorlin syndrome or Gorlin-Goltz syndrome.		

— VALIDATION IMAGES —

Sample: Lane 1: Cerebrum (Mouse) Lysate at 40 ug
Lane 2: Cerebrum (Rat) Lysate at 40 ug
Primary: Anti-Patched (bs-24459R) at 1/1000 dilution
Secondary: IRDye800CW Goat Anti-Rabbit IgG at 1/20000 dilution
Predicted band size: 161 kD
Observed band size: 161 kD