

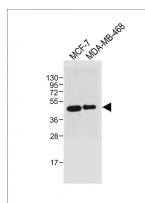
**bsm-51745M****[ Primary Antibody ]****BioSS**  
ANTIBODIES

www.bioss.com.cn

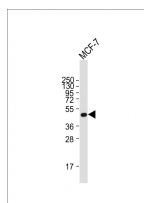
sales@bioss.com.cn

techsupport@bioss.com.cn

400-901-9800

**SULT2B1 Mouse mAb****— DATASHEET —****Host:** Mouse**Isotype:** IgG1, k**Clonality:** Monoclonal**CloneNo.:** C11G7**GeneID:** 6820**SWISS:** O00204**Target:** SULT2B1**Purification:** affinity purified by Protein G**Concentration:** 1mg/ml**Storage:** 0.01M TBS (pH7.4) with 1% BSA, 0.02% Proclin300 and 50% Glycerol.  
Shipped at 4°C. Store at -20°C for one year. Avoid repeated freeze/thaw cycles.**Background:** Sulfotransferase enzymes catalyze the sulfate conjugation of many hormones, neurotransmitters, drugs, and xenobiotic compounds. These cytosolic enzymes are different in their tissue distributions and substrate specificities. The gene structure (number and length of exons) is similar among family members. This gene sulfates dehydroepiandrosterone but not 4-nitrophenol, a typical substrate for the phenol and estrogen sulfotransferase subfamilies. Two alternatively spliced variants that encode different isoforms have been described. [provided by RefSeq, Jul 2008]**Applications:** WB (1:500-2000)**Reactivity:** Human**Predicted MW.:** 41 kDa**Subcellular Location:** Cytoplasm**— VALIDATION IMAGES —**

Sample: Lane 1: MCF-7 cell lysates Lane 2: MDA-MB-468 cell lysates Primary: Anti-SULT2B1 (bsm-51745M) at 1/2000 dilution Secondary: IRDye800CW Goat Anti-Mouse IgG at 1/20000 dilution Predicted band size: 41 kD Observed band size: 50 kD



Sample: Lane 1: MCF-7 cell lysates Primary: Anti-SULT2B1 (bsm-51745M) at 1/2000 dilution Secondary: IRDye800CW Goat Anti-Mouse IgG at 1/20000 dilution Predicted band size: 41 kD Observed band size: 50 kD