

**bsm-51741M****[ Primary Antibody ]****Cyclooxygenase 2 Mouse mAb****BioSS**  
**ANTIBODIES**

www.bioss.com.cn

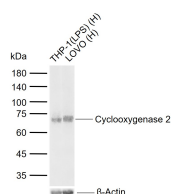
sales@bioss.com.cn

techsupport@bioss.com.cn

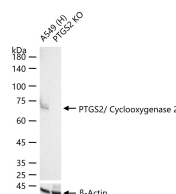
400-901-9800

**— DATASHEET —**

<b>Host:</b> Mouse	<b>Isotype:</b> IgG1, k	<b>Applications:</b> WB (1:200-1000)  <b>Reactivity:</b> Human  <b>Predicted MW.:</b> 65 kDa  <b>Subcellular Location:</b> Cytoplasm
<b>Clonality:</b> Monoclonal	<b>CloneNo.:</b> F4H9	
<b>GeneID:</b> 5743	<b>SWISS:</b> P35354	
<b>Target:</b> Cyclooxygenase 2		
<b>Purification:</b> affinity purified by Protein G		
<b>Concentration:</b> 1mg/ml		
<b>Storage:</b> 0.01M TBS (pH7.4) with 1% BSA, 0.02% Proclin300 and 50% Glycerol. Shipped at 4°C. Store at -20°C for one year. Avoid repeated freeze/thaw cycles.		
<b>Background:</b> Prostaglandin-endoperoxide synthase (PTGS), also known as cyclooxygenase, is the key enzyme in prostaglandin biosynthesis, and acts both as a dioxygenase and as a peroxidase. There are two isoforms of PTGS: a constitutive PTGS1 and an inducible PTGS2, which differ in their regulation of expression and tissue distribution. This gene encodes the inducible isoform. It is regulated by specific stimulatory events, suggesting that it is responsible for the prostanoid biosynthesis involved in inflammation and mitogenesis. [provided by RefSeq, Feb 2009]		

**— VALIDATION IMAGES —**

Sample: Lane 1: Human THP-1(LPS) cell lysates  
 Lane 2: Human LOVO cell lysates Primary: Anti-Cyclooxygenase 2 (bsm-51741M) at 1/500 dilution Secondary: IRDye800CW Goat Anti-Mouse IgG at 1/20000 dilution Predicted band size: 65 kDa Observed band size: 70 kDa



25 ug total protein per lane of various lysates (see on figure) probed with PTGS2/Cyclooxygenase 2 monoclonal antibody, unconjugated (bsm-51741M) at 1:1000 dilution and 4°C overnight incubation. Followed by conjugated secondary antibody incubation at r.t. for 60 min.