

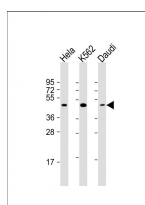
bsm-51728M**[Primary Antibody]****PLIN3 Mouse mAb****BioSS**
ANTIBODIES

www.bioss.com.cn

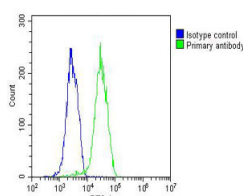
sales@bioss.com.cn

techsupport@bioss.com.cn

400-901-9800

— DATASHEET —**Host:** Mouse**Isotype:** IgG2a, κ **Clonality:** Monoclonal**CloneNo.:** D2A3**GeneID:** 10226**SWISS:** O60664**Target:** PLIN3**Immunogen:** KLH conjugated synthetic peptide derived from human PLIN3: 1-434/434.**Purification:** affinity purified by Protein G**Concentration:** 1mg/ml**Storage:** 0.01M TBS (pH7.4) with 1% BSA, 0.02% Proclin300 and 50% Glycerol.
Shipped at 4°C. Store at -20°C for one year. Avoid repeated freeze/thaw cycles.**Background:** Mannose 6-phosphate receptors (MPRs) deliver lysosomal hydrolase from the Golgi to endosomes and then return to the Golgi complex. The protein encoded by this gene interacts with the cytoplasmic domains of both cation-independent and cation-dependent MPRs, and is required for endosome-to-Golgi transport. This protein also binds directly to the GTPase RAB9 (RAB9A), a member of the RAS oncogene family. The interaction with RAB9 has been shown to increase the affinity of this protein for its cargo. Multiple transcript variants encoding different isoforms have been found for this gene.[provided by RefSeq, Aug 2009]**Applications:** **WB** (1:500-2000)**Flow-Cyt** (1:20-50)**Reactivity:** Human**Predicted
MW.:** 48 kDa**Subcellular
Location:** Cell membrane ,Cytoplasm**— VALIDATION IMAGES —**

Sample: Lane 1: HeLa cell lysates Lane 2: K562 cell lysates Lane 3: Daudi cell lysates
 Primary: Anti-PLIN3 (bsm-51728M) at 1/2000 dilution
 Secondary: IRDye800CW Goat Anti-Mouse IgG at 1/20000 dilution
 Predicted band size: 48 kD
 Observed band size: 48 kD



Blank control: HUVEC. Primary Antibody (green line): Mouse Anti-PLIN3 antibody (bsm-51728M)
 Dilution: 1:25; Isotype Control Antibody (blue line): Mouse IgG Secondary Antibody : Goat anti-mouse IgG-AF488 Dilution: 1:200 Protocol The cells were fixed with 4% PFA (10min at room temperature) and then permeabilized with 90% ice-cold methanol for 20 min at -20°C. The cells were then incubated in 5%BSA to block non-specific protein-protein interactions for 30 min at room temperature .Cells stained with Primary Antibody for 30 min at room temperature. The secondary antibody used for 40 min at room temperature. Acquisition of 20,000 events was performed.