

SDHB Recombinant Rabbit mAb

Catalog Number: bsm-54180R

Target Protein: SDHB

Concentration: 1mg/ml

Form: Liquid

Host: Rabbit

Clonality: Recombinant

Isotype: IgG

Applications: WB (1:500-2000), IHC-P (1:100-500), IHC-F (1:100-500), IF (1:100-500)

Reactivity: Human, Mouse, Rat

Predicted MW: 32 kDa

Entrez Gene: 6390

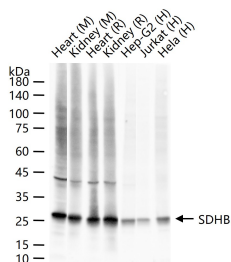
Swiss Prot: P21912

Storage: 0.01M TBS (pH7.4) with 1% BSA, 0.02% Proclin300 and 50% Glycerol.

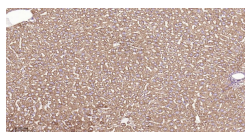
Shipped at 4°C. Store at -20°C for one year. Avoid repeated freeze/thaw cycles.

Background: ron-sulfur protein (IP) subunit of succinate dehydrogenase (SDH) that is involved in complex II of the mitochondrial electron transport chain and is responsible for transferring electrons from succinate to ubiquinone (coenzyme Q).

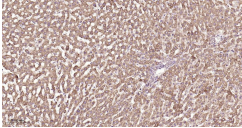
VALIDATION IMAGES



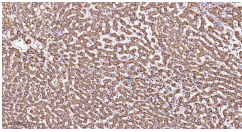
25 ug total protein per lane of various lysates (see on figure) probed with SDHB monoclonal antibody, unconjugated (bsm-54180R) at 1:1000 dilution and 4°C overnight incubation. Followed by conjugated secondary antibody incubation at r.t. for 60 min.



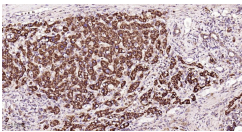
Paraformaldehyde-fixed, paraffin embedded Mouse Liver; Antigen retrieval by boiling in sodium citrate buffer (pH6.0) for 15 min; Antibody incubation with SDHB Monoclonal Antibody, Unconjugated(bsm-54180R) at 1:200 overnight at 4°C, followed by conjugation to the bs-0295G-HRP and DAB (C-0010) staining.



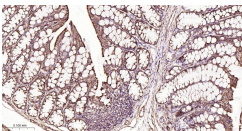
Paraformaldehyde-fixed, paraffin embedded Rat Liver; Antigen retrieval by boiling in sodium citrate buffer (pH6.0) for 15 min; Antibody incubation with SDHB Monoclonal Antibody, Unconjugated(bsm-54180R) at 1:200 overnight at 4°C, followed by conjugation to the bs-0295G-HRP and DAB (C-0010) staining.



Paraformaldehyde-fixed, paraffin embedded Human Liver; Antigen retrieval by boiling in sodium citrate buffer (pH6.0) for 15 min; Antibody incubation with SDHB Monoclonal Antibody, Unconjugated(bsm-54180R) at 1:200 overnight at 4°C, followed by conjugation to the bs-0295G-HRP and DAB (C-0010) staining.



Paraformaldehyde-fixed, paraffin embedded Human Liver Cancer; Antigen retrieval by boiling in sodium citrate buffer (pH6.0) for 15 min; Antibody incubation with SDHB Monoclonal Antibody, Unconjugated(bsm-54180R) at 1:200 overnight at 4°C, followed by conjugation to the bs-0295G-HRP and DAB (C-0010) staining.



Paraformaldehyde-fixed, paraffin embedded Mouse Colon; Antigen retrieval by boiling in sodium citrate buffer (pH6.0) for 15 min; Antibody incubation with SDHB Monoclonal Antibody, Unconjugated(bsm-54180R) at 1:200 overnight at 4°C, followed by conjugation to the bs-0295G-HRP and DAB (C-0010) staining.