

---

## RAB5B Mouse mAb

Catalog Number: bsm-51720M

Target Protein: RAB5B

Concentration: 1mg/ml

Form: Liquid

Host: Mouse

Clonality: Monoclonal

Clone No.: D4F6

Isotype: IgG1,K

Applications: WB (1:500-2000)

Reactivity: Human, Mouse

Predicted MW: 24 kDa

Subcellular Cell membrane ,Cytoplasm

Locations:

Entrez Gene: 5869

Swiss Prot: P61020

Purification: affinity purified by Protein G

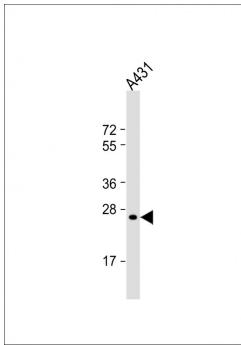
Storage: 0.01M TBS (pH7.4) with 1% BSA, 0.02% Proclin300 and 50% Glycerol.

Shipped at 4°C. Store at -20°C for one year. Avoid repeated freeze/thaw cycles.

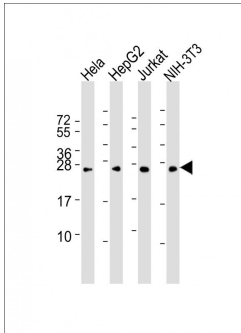
**Background:** The Ras-related superfamily of guanine nucleotide binding proteins, which includes the R-Ras, Rap, Ral/Rec and Rho/Rab subfamilies, exhibit 30-60% homology with Ras p21. Accumulating data suggests an important role for Rab proteins, either in endocytosis or in biosynthetic protein transport. The transport of newly synthesized proteins from the endoplasmic reticulum to various stacks of the Golgi complex and to secretory vesicles involves at each stage the movement of carrier vesicles, a process that appears to involve Rab protein function. The possibility that Rab proteins might also direct the exocytosis from secretory vesicles to the plasma membrane is supported by the observation that in yeast, the SEC4 protein, which is 40% homologous to Rab proteins, is associated with secretory vesicles. At least eight members of the Rab subfamily have been identified, each of which is found at a particular stage of a membrane transport pathway.

### VALIDATION IMAGES

---



Sample: Lane 1: A431 cell lysates Primary: Anti-RAB5B (bsm-51720M) at 1/2000 dilution Secondary: IRDye800CW Goat Anti-Mouse IgG at 1/20000 dilution Predicted band size: 24 kD Observed band size: 24 kD



Sample: Lane 1: HeLa cell lysates Lane 2: HepG2 cell lysates Lane 3: Jurkat cell lysates Lane 4: NIH-3T3 cell lysates Primary: Anti-RAB5B (bsm-51720M) at 1/2000 dilution Secondary: IRDye800CW Goat Anti-Mouse IgG at 1/20000 dilution Predicted band size: 24 kD Observed band size: 26 kD