

bs-15140R**[Primary Antibody]****C22orf43 Rabbit pAb****Bioss**
ANTIBODIES

www.bioss.com.cn

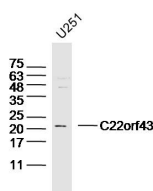
sales@bioss.com.cn

techsupport@bioss.com.cn

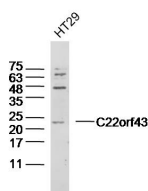
400-901-9800

— DATASHEET —

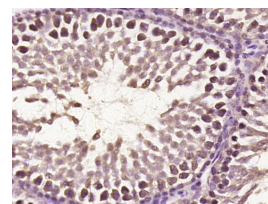
Host: Rabbit	Isotype: IgG	Applications: WB (1:500-2000) IHC-P (1:100-500) IHC-F (1:100-500) IF (1:100-500) Reactivity: Human, Rat Predicted MW.: 25 kDa Subcellular Location: Extracellular matrix, Cytoplasm, Nucleus
Clonality: Polyclonal		
GeneID: 51233	SWISS: Q6PGQ1	
Target: C22orf43		
Immunogen: KLH conjugated synthetic peptide derived from human C22orf43 : 1-100/229.		
Purification: affinity purified by Protein A		
Concentration: 1mg/ml		
Storage: 0.01M TBS (pH7.4) with 1% BSA, 0.02% Proclin300 and 50% Glycerol. Shipped at 4°C. Store at -20°C for one year. Avoid repeated freeze/thaw cycles.		
Background: C22orf43 (chromosome 22 open reading frame 43), also known as MGC33025 or MGC75009, is a 229 amino acid protein encoded by a gene located on human chromosome 22, which contains over 500 genes and about 49 million bases. As the second smallest human chromosome, chromosome 22 contains a wide variety of genes with numerous functions. Phelan-McDermid syndrome, Neurofibromatosis type 2 and autism are associated with chromosome 22. A schizophrenia susceptibility locus has been identified on chromosome 22 and studies show that 22q11 deletion symptoms include a high incidence of schizophrenia. Translocations between chromosomes 9 and 22 may lead to the formation of the Philadelphia Chromosome and the subsequent production of the novel fusion protein, BCR-Abl, a potent cell proliferation activator found in several types of leukemia.		

— VALIDATION IMAGES —

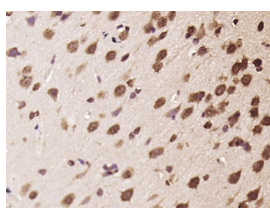
Sample: U251 (human) Cell Lysate at 40 ug
 Primary: Anti-C22orf43 (bs-15140R) at 1/300 dilution
 Secondary: IRDye800CW Goat Anti-Rabbit IgG at 1/20000 dilution
 Predicted band size: 25 kD
 Observed band size: 22 kD



Sample: HT29 (human) Cell Lysate at 40 ug
 Primary: Anti-C22orf43 (bs-15140R) at 1/300 dilution
 Secondary: IRDye800CW Goat Anti-Rabbit IgG at 1/20000 dilution
 Predicted band size: 25 kD
 Observed band size: 23 kD



Paraformaldehyde-fixed, paraffin embedded (rat testis tissue); Antigen retrieval by boiling in sodium citrate buffer (pH 6.0) for 15 min; Block endogenous peroxidase by 3% hydrogen peroxide for 20 minutes; Blocking buffer (normal goat serum) at 37°C for 30 min; Antibody incubation with (C22orf43) Polyclonal Antibody, Unconjugated (bs-15140R) at 1:400 overnight at 4°C, followed by operating according to SP Kit (Rabbit) (sp-0023) instructions and DAB staining.



Paraformaldehyde-fixed, paraffin embedded (rat)

Important Note: This product as supplied is intended for research use only, not for use in human, therapeutic or diagnostic applications.

brain tissue); Antigen retrieval by boiling in sodium citrate buffer (pH6.0) for 15min; Block endogenous peroxidase by 3% hydrogen peroxide for 20 minutes; Blocking buffer (normal goat serum) at 37°C for 30min; Antibody incubation with (C22orf43) Polyclonal Antibody, Unconjugated (bs-15140R) at 1:400 overnight at 4°C, followed by operating according to SP Kit(Rabbit) (sp-0023) instructions and DAB staining.