

bsm-51708M**[Primary Antibody]****PDCD1LG2 Mouse mAb****BioSS**
ANTIBODIES

www.bioss.com.cn

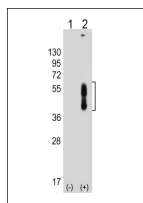
sales@bioss.com.cn

techsupport@bioss.com.cn

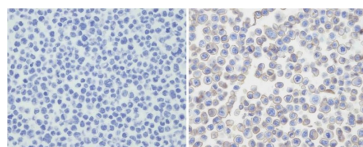
400-901-9800

— DATASHEET —

Host: Mouse	Isotype: IgG1, k	Applications: WB (1:1000-2000) IHC-P (1:100-400) IHC-F (1:100-400) IF (1:100-500) Reactivity: Human Predicted MW.: 29 kDa Subcellular Location: Secreted ,Cell membrane
Clonality: Monoclonal	CloneNo.: G8F6	
GeneID: 80380	SWISS: Q9BQ51	
Target: PDCD1LG2		
Immunogen: KLH conjugated synthetic peptide derived from human PDCD1LG2: 31-130/273.		
Purification: affinity purified by Protein G		
Concentration: 1mg/ml		
Storage: 0.01M TBS (pH7.4) with 1% BSA, 0.02% Proclin300 and 50% Glycerol. Shipped at 4°C. Store at -20°C for one year. Avoid repeated freeze/thaw cycles.		
Background: B7DC is a 33kDa member of the immunoglobulin receptor superfamily expressed on DC, liver and a small subset of macrophages as well as a few transformed cell lines. B7DC has been reported to be stimulatory on dendritic cells when cross linked and to inhibit T cell activation upon engaging the PD1 receptor. B7DC has also been reported to bind to an alternative receptor and to mediate T cell activation through non PD1 mediated interactions.		

— VALIDATION IMAGES —

Sample: Lane 1: Non-transfected 293T cell lysates Lane 2: Transfected PD-L2-transfected 293T cell lysates Primary: Anti-PDCD1LG2 (bsm-51708M) at 1/8000 dilution Secondary: IRDye800CW Goat Anti-Mouse IgG at 1/20000 dilution Predicted band size: 29 kD Observed band size: 40-55 kD



Immunohistochemical analysis of PDL-2 in untransfected(left) or transfected(right) with 293T cell sections. Cell was fixed with formaldehyde; antigen retrieval was by heat mediation with a EDTA buffer (pH9. 0). Samples were incubated with primary antibody (1:25) for 1 hours at room temperature. A undiluted biotinylated goat polyvalent antibody was used as the secondary antibody.