

bs-24465R**[Primary Antibody]****HMGB1 Rabbit pAb****Bioss**
ANTIBODIES

www.bioss.com.cn

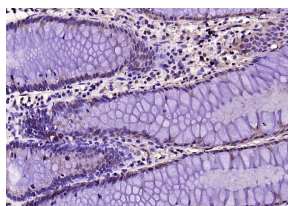
sales@bioss.com.cn

techsupport@bioss.com.cn

400-901-9800

— DATASHEET —

Host: Rabbit	Isotype: IgG	Applications: IHC-P (1:400-800) IHC-F (1:400-800) IF (1:100-500) Reactivity: Human (predicted: Mouse, Rat, Pig, Cow, Dog, Horse) Predicted MW.: 25 kDa Subcellular Location: Nucleus
Clonality: Polyclonal		
GeneID: 3146	SWISS: P09429	
Target: HMGB1		
Immunogen: KLH conjugated synthetic peptide derived from human HMGB1: 121-215/215.		
Purification: affinity purified by Protein A		
Concentration: 1mg/ml		
Storage: 0.01M TBS (pH7.4) with 1% BSA, 0.02% Proclin300 and 50% Glycerol. Shipped at 4°C. Store at -20°C for one year. Avoid repeated freeze/thaw cycles.		
Background: High Mobility Group Box-1 (HMGB1) is a cytokine implicated in the pathogenesis of rheumatoid arthritis (RA) and other inflammatory diseases. The cholinergic anti-inflammatory pathway, a vagus nerve dependent mechanism, inhibits HMGB1 release in experimental disease models		

— VALIDATION IMAGES —

Paraformaldehyde-fixed, paraffin embedded (human colon); Antigen retrieval by boiling in sodium citrate buffer (pH6.0) for 15min; Block endogenous peroxidase by 3% hydrogen peroxide for 20 minutes; Blocking buffer (normal goat serum) at 37°C for 30min; Antibody incubation with (HMGB1) Polyclonal Antibody, Unconjugated (bs-24465R) at 1:200 overnight at 4°C, followed by operating according to SP Kit(Rabbit) (sp-0023) instructions and DAB staining.