

**bsm-51690M****[ Primary Antibody ]****DKK2 Mouse mAb****BioSS**  
**ANTIBODIES**

www.bioss.com.cn

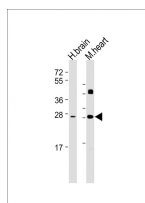
sales@bioss.com.cn

techsupport@bioss.com.cn

400-901-9800

**— DATASHEET —**

<b>Host:</b> Mouse	<b>Isotype:</b> IgG1, k	<b>Applications:</b> WB (1:500-1000)  <b>Reactivity:</b> Human, Mouse  <b>Predicted MW.:</b> 25 kDa  <b>Subcellular Location:</b> Secreted
<b>Clonality:</b> Monoclonal	<b>CloneNo.:</b> J3F5	
<b>GeneID:</b> 27123	<b>SWISS:</b> Q9UBU2	
<b>Target:</b> DKK2		
<b>Purification:</b> affinity purified by Protein G		
<b>Concentration:</b> 1mg/ml		
<b>Storage:</b> 0.01M TBS (pH7.4) with 1% BSA, 0.02% Proclin300 and 50% Glycerol. Shipped at 4°C. Store at -20°C for one year. Avoid repeated freeze/thaw cycles.		
<b>Background:</b> This gene encodes a protein that is a member of the dickkopf family. The secreted protein contains two cysteine rich regions and is involved in embryonic development through its interactions with the Wnt signaling pathway. It can act as either an agonist or antagonist of Wnt/beta-catenin signaling, depending on the cellular context and the presence of the co-factor kremen 2. Activity of this protein is also modulated by binding to the Wnt co-receptor LDL-receptor related protein 6 (LRP6). [provided by RefSeq, Jul 2008]		

**— VALIDATION IMAGES —**

Sample: Lane 1: Human brain tissue lysates Lane  
2: Mouse Heart tissue lysates Primary: Anti-DKK2  
(bsm-51690M) at 1/2000 dilution Secondary:  
IRDye800CW Goat Anti-Mouse IgG at 1/20000  
dilution Predicted band size: 25 kD Observed  
band size: 26 kD