

**bsm-51686M****[ Primary Antibody ]****BioSS**  
ANTIBODIES

www.bioss.com.cn

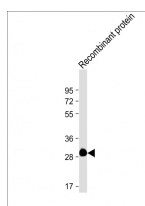
sales@bioss.com.cn

techsupport@bioss.com.cn

400-901-9800

**ROS1 Mouse mAb****— DATASHEET —**

<b>Host:</b> Mouse	<b>Isotype:</b> IgG1, k	<b>Applications:</b> <b>WB</b> (1:500-2000) <b>IHC-P</b> (1:100-500) <b>IHC-F</b> (1:200-300) <b>IF</b> (1:100-500)  <b>Reactivity:</b> Recombinant protein (predicted: Human)   <b>Predicted MW.:</b> 258 kDa  <b>Subcellular Location:</b> Cell membrane
<b>Clonality:</b> Monoclonal	<b>CloneNo.:</b> F7Y3	
<b>GeneID:</b> 6098	<b>SWISS:</b> P08922	
<b>Target:</b> ROS1		
<b>Purification:</b> affinity purified by Protein G		
<b>Concentration:</b> 1mg/ml		
<b>Storage:</b> 0.01M TBS (pH7.4) with 1% BSA, 0.02% Proclin300 and 50% Glycerol. Shipped at 4°C. Store at -20°C for one year. Avoid repeated freeze/thaw cycles.		
<b>Background:</b> This proto-oncogene, highly-expressed in a variety of tumor cell lines, belongs to the sevenless subfamily of tyrosine kinase insulin receptor genes. The protein encoded by this gene is a type I integral membrane protein with tyrosine kinase activity. The protein may function as a growth or differentiation factor receptor. [provided by RefSeq, Jul 2008]		

**— VALIDATION IMAGES —**

Sample: Lane 1: Recombinant ROS1 protein  
Primary: Anti-ROS1 (bsm-51686M) at 1/4000  
dilution Secondary: IRDye800CW Goat Anti-Mouse IgG at 1/20000 dilution Predicted band size: 258 kD Observed band size: 30 kD